

## DYNLL1 RABBIT MAB

**Cat.#:** N262150

**Product Name:** Anti-DYNLL1 Rabbit Monoclonal Antibody

**Synonyms:** LC8; PIN; DLC1; DLC8; LC8a; DNCL1; hdlc1; DNCLC1

**UNIPROT ID:** P63167

**Background:** Acts as one of several non-catalytic accessory components of the cytoplasmic dynein 1 complex that are thought to be involved in linking dynein to cargos and to adapter proteins that regulate dynein function. Cytoplasmic dynein 1 acts as a motor for the intracellular retrograde motility of vesicles and organelles along microtubules. May play a role in changing or maintaining the spatial distribution of cytoskeletal structures.

**Immunogen:** A synthetic peptide of human DYNLL1

**Applications:** WB,IHC-P,IP

**Recommended Dilutions:** WB: 1/500-1/1000 IHC: 1/50-1/100 IP: 1/20

**Host Species:** Rabbit

**Clonality:** Rabbit Monoclonal

**Clone ID:** R06-4B1

**MW:** Calculated MW: 10 kDa; Observed MW: 10 kDa

**Isotype:** IgG

**Purification:** Affinity Purified

**Species Reactivity:** Human,Mouse

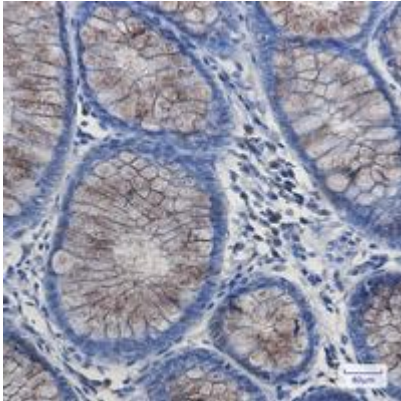
**Conjugation:** Unconjugated

**Modification:** Unmodified

**Constituents:** PBS (without Mg<sup>2+</sup> and Ca<sup>2+</sup>), pH 7.3 containing 50% glycerol, 0.5% BSA and 0.02% sodium azide

**Research Areas:** Cell Biology

**Storage & Shipping:** Store at -20°C. Avoid repeated freezing and thawing



Immunohistochemistry analysis of paraffin-embedded Human colon cancer using DYNLL1 antibody. High-pressure and temperature Sodium Citrate pH 6.0 was used for antigen retrieval.



Western blot analysis of DYNLL1 in 3T3, HeLa lysates using DYNLL1 antibody.