

DZIP1 RABBIT PAB

Cat.#: S221928

Product Name: Anti-DZIP1 Rabbit Polyclonal Antibody

Synonyms: DZIP; DZIPt1

UNIPROT ID: Q86YF9 (Gene Accession - NP_945319)

Background: DZIP1(DAZ interacting protein 1) is also known as DZIP or DZIP2 and is a 867 amino acid protein which is expressed as 3 isoforms, designated DZIPb, DZIPt1 and DZIPt2. DZIP1 is localized to testis, oocytes, ovary and fetal brain, as well as in embryonic stem cells and germ cells. In testis, DZIP1 is localized to the nucleus and also shows some cytoplasmic distribution in spermatogonia. DZIP1 belongs to the C2H2-type zinc-finger protein family, and, characteristic of the C2H2-type zinc-finger protein family, DZIP1 contains one C2H2-type zinc-finger region through which it is thought to interact with DAZ, an interaction that promotes spermiogenesis. DZIP1 expression is not found in those afflicted with Sertoli cell-only syndrome (characterized by the absence of germ cells in the testis), suggesting that the lack of DZIP1 may be involved in the pathogenesis of Sertoli cell-only syndrome-induced male sterility

Immunogen: Synthetic peptide of human DZIP1

Applications: ELISA, WB, IHC

Recommended Dilutions: IHC: 25-100;WB: 200-1000;ELISA: 5000-10000

Host Species: Rabbit

Clonality: Rabbit Polyclonal

Isotype: Immunogen-specific rabbit IgG

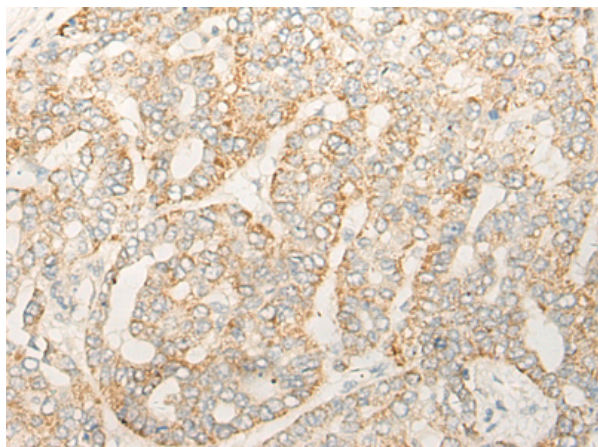
Purification: Antigen affinity purification

Species Reactivity: Human

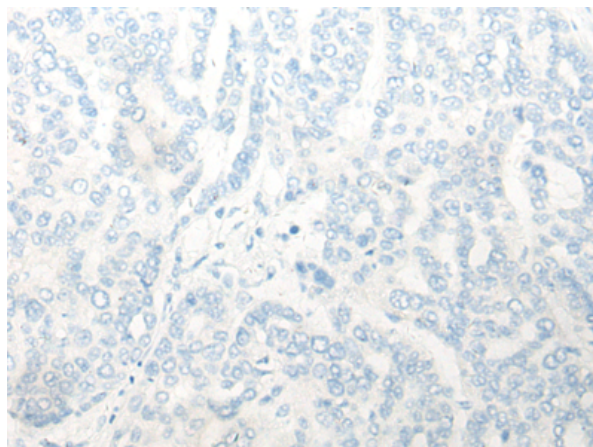
Constituents: PBS (without Mg²⁺ and Ca²⁺), pH 7.4, 150 mM NaCl, 0.05% Sodium Azide and 40% glycerol

Research Areas: Stem Cells, Developmental Biology

Storage & Shipping: Store at -20°C. Avoid repeated freezing and thawing



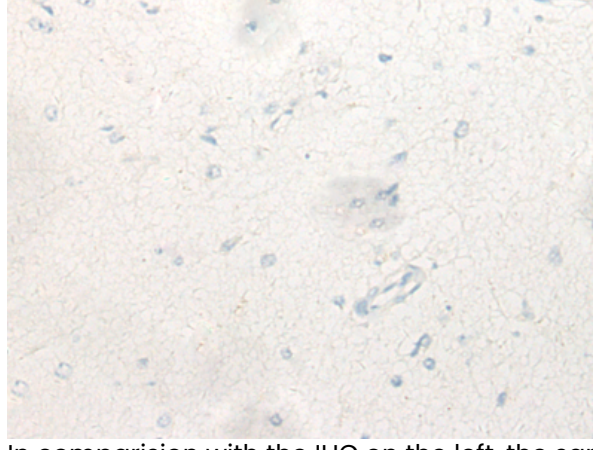
Immunohistochemistry analysis of paraffin embedded Human liver cancer tissue using 221928(DZIPI Antibody) at a dilution of 1/40(Cytoplasm).



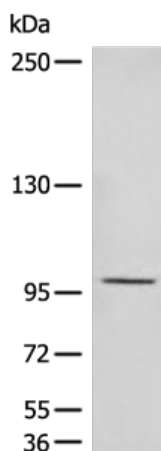
In comparison with the IHC on the left, the same paraffin-embedded Human liver cancer tissue is first treated with the synthetic peptide and then with 221928(Anti-DZIPI Antibody) at dilution 1/40.



The image on the left is immunohistochemistry of paraffin-embedded Human brain tissue using 221928(Anti-DZIPI Antibody) at a dilution of 1/40.



In comparison with the IHC on the left, the same paraffin-embedded Human brain tissue is first treated with synthetic peptide and then with D263751(Anti-DZIPI Antibody) at dilution 1/40.



Gel: 6%SDS-PAGE, Lysate: 40 µg;
 Lane: PC-3 cell lysate;
 Primary antibody: 221928(DZIPI Antibody) at dilution 1/200;
 Secondary antibody: Goat anti rabbit IgG at 1/8000 dilution;
 Exposure time: 5 minutes



Product Description

Pioneering GTPase and Oncogene Product Development since 2010
