

E CADHERIN (6B10) MOUSE MAB

Cat.#: N261162

Product Name: Anti-E Cadherin (6B10) Mouse Monoclonal Antibody

Synonyms: CDH1; CDHE; UVO; Cadherin-1; CAM 120/80; Epithelial cadherin; E-cadherin; Uvomorulin; CD antigen CD324

UNIPROT ID: P12830

Background: CDH1 a single-pass type I membrane protein, and calcium dependent cell adhesion proteins. It is a ligand for integrin alpha-E/beta-7, and it colocalizes with DLG7 at sites of cell-cell contact in intestinal epithelial cells.

Immunogen: A synthesized peptide derived from human E Cadherin

Applications: WB,IHC-P

Recommended Dilutions: WB: 1/500-1/1000 IHC: 1/50-1/100

Host Species: Mouse

Clonality: Mouse Monoclonal

Clone ID: 6B10-F4-G10

MW: Calculated MW: 97 kDa; Observed MW: 135 kDa

Isotype: IgG1

Purification: Affinity Purified

Species Reactivity: Human,Mouse

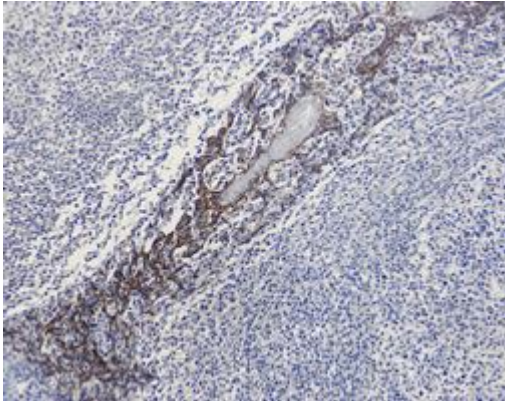
Conjugation: Unconjugated

Modification: Unmodified

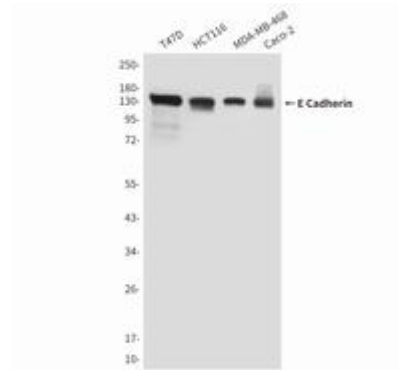
Constituents: PBS (without Mg²⁺ and Ca²⁺), pH 7.3 containing 50% glycerol, 0.5% BSA and 0.02% sodium azide

Research Areas: Signal Transduction

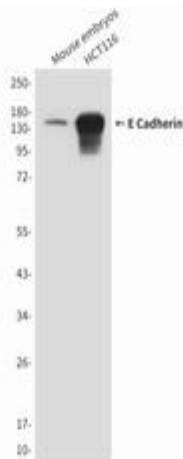
Storage & Shipping: Store at -20°C. Avoid repeated freezing and thawing



Immunohistochemistry analysis of paraffin-embedded Human tonsils using ECadherin (6B1) antibody. High-pressure and temperature Sodium Citrate pH 6.0 was used for antigen retrieval.



Western blot analysis of ECadherin in T47D, HCT116, MDA-MB-468 and Caco2 lysates using ECadherin antibody.



Western blot analysis of ECadherin (6B10) in mouse embryos and HCT116 lysates using ECadherin antibody.