

E2F1 (4G8) MOUSE MAB

Cat.#: N261140

Product Name: Anti-E2F1 (4G8) Mouse Monoclonal Antibody

Synonyms: E2F1; RBBP3; Transcription factor E2F1; E2F-1; PBR3; Retinoblastoma-associated protein 1; RBAP-1; Retinoblastoma-binding protein 3; RBBP-3; pRB-binding protein E2F-1

UNIPROT ID: Q01094

Background: The protein encoded by this gene is a member of the E2F family of transcription factors. The E2F family plays a crucial role in the control of cell cycle and action of tumor suppressor proteins and is also a target of the transforming proteins of small DNA tumor viruses.

Immunogen: Purified recombinant human E2F-1 protein fragments expressed in E.coli.

Applications: WB, ICC/IF, IP

Recommended Dilutions: WB: 1/500-1/1000 IF: 1/50-1/200 IP: 1/20

Host Species: Mouse

Clonality: Mouse Monoclonal

Clone ID: 4G8-2C2-C12

MW: Calculated MW: 47 kDa; Observed MW: 70 kDa

Isotype: IgG2b

Purification: Affinity Purified

Species Reactivity: Human, Mouse, Rat

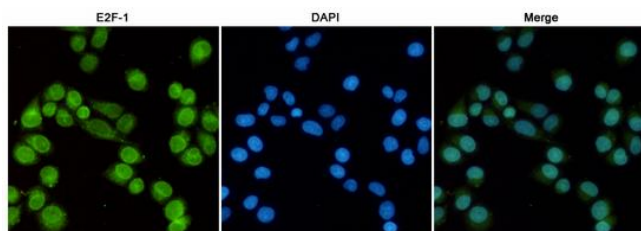
Conjugation: Unconjugated

Modification: Unmodified

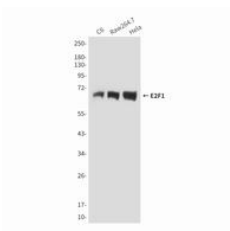
Constituents: PBS (without Mg²⁺ and Ca²⁺), pH 7.3 containing 50% glycerol, 0.5% BSA and 0.02% sodium azide

Research Areas: Epigenetics and Nuclear Signaling

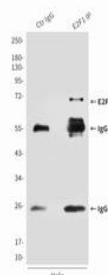
Storage & Shipping: Store at -20°C. Avoid repeated freezing and thawing



Immunofluorescence analysis of E2F1 (4G8) in HeLa using E2F1 antibody, and DAPI (blue).



Western blot analysis of E2F1 in C6, Raw264.7 and HeLa lysates using E2F1 antibody.



Immunoprecipitation analysis of E2F1 (4G8) in HeLa lysates using E2F1 antibody.