

## E2F6 RABBIT PAB

**Cat.#:** S210287

**Product Name:** Anti-E2F6 Rabbit Polyclonal Antibody

**Synonyms:** E2F-6

**UNIPROT ID:** O75461 (Gene Accession - BC008348 )

**Background:** This gene encodes a member of a family of transcription factors that play a crucial role in the control of the cell cycle. The protein encoded by this gene lacks the transactivation and tumor suppressor protein association domains found in other family members, and contains a modular suppression domain that functions in the inhibition of transcription. It interacts in a complex with chromatin modifying factors. There are pseudogenes for this gene on chromosomes 22 and X. Alternative splicing results in multiple transcript variants.

**Immunogen:** Fusion protein of human E2F6

**Applications:** ELISA, WB, IHC

**Recommended Dilutions:** IHC: 100-300;WB: 500-2000;ELISA: 2000-5000

**Host Species:** Rabbit

**Clonality:** Rabbit Polyclonal

**Isotype:** Immunogen-specific rabbit IgG

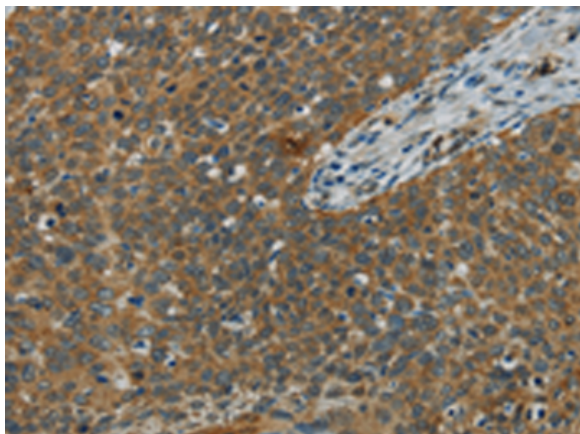
**Purification:** Antigen affinity purification

**Species Reactivity:** Human, Mouse

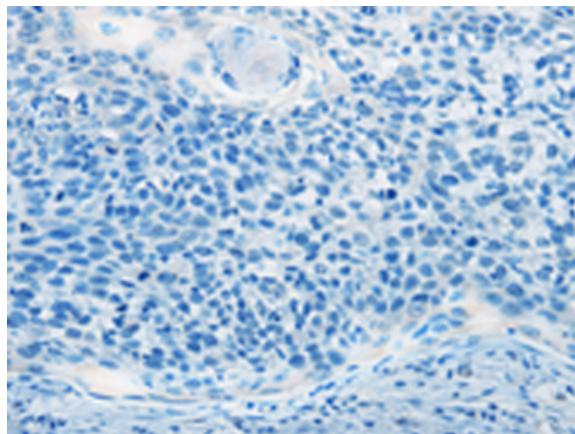
**Constituents:** PBS (without Mg<sup>2+</sup> and Ca<sup>2+</sup>), pH 7.4, 150 mM NaCl, 0.05% Sodium Azide and 40% glycerol

**Research Areas:** Epigenetics and Nuclear Signaling

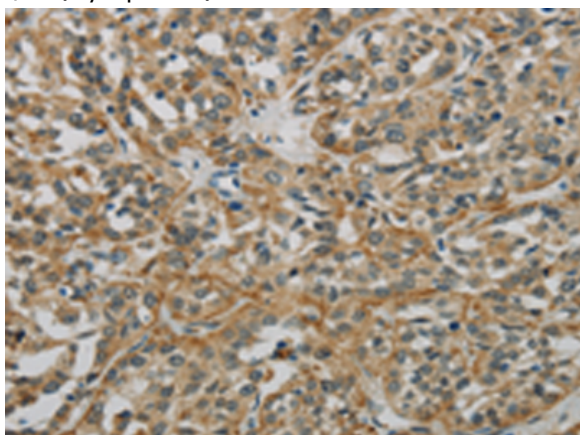
**Storage & Shipping:** Store at -20°C. Avoid repeated freezing and thawing



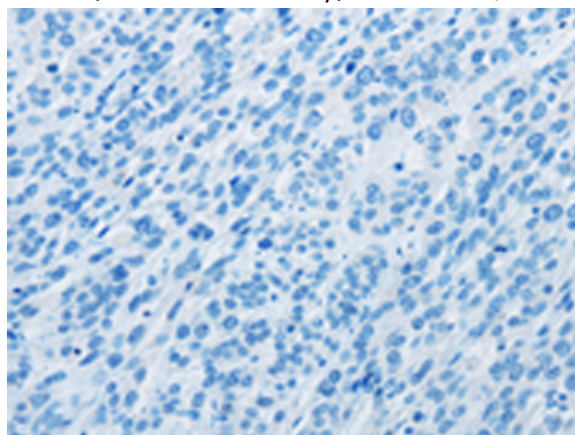
Immunohistochemistry analysis of paraffin embedded Human cervical cancer tissue using 210287(E2F6 Antibody) at a dilution of 1/60(Cytoplasm).



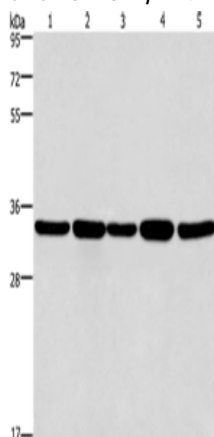
In comparison with the IHC on the left, the same paraffin-embedded Human cervical cancer tissue is first treated with the fusion protein and then with 210287(Anti-E2F6 Antibody) at dilution 1/60.



The image on the left is immunohistochemistry of paraffin-embedded Human esophagus cancer tissue using 210287(Anti-E2F6 Antibody) at a dilution of 1/60.



In comparison with the IHC on the left, the same paraffin-embedded Human esophagus cancer tissue is first treated with fusion protein and then with D120574(Anti-E2F6 Antibody) at dilution 1/60.



Gel: 8%SDS-PAGE, Lysate: 40 µg;  
 Lane 1-5: LoVo cells, A549 cells, human hepatocellular carcinoma tissue, Jurkat cells, Hela cells;  
 Primary antibody: 210287(E2F6 Antibody) at dilution 1/650;  
 Secondary antibody: Goat anti rabbit IgG at 1/8000 dilution;  
 Exposure time: 30 seconds



# Product Description

Pioneering GTPase and Oncogene Product Development since 2010

---