

EBI3 RABBIT PAB

Cat.#: S218197

Product Name: Anti-EBI3 Rabbit Polyclonal Antibody

Synonyms: IL27B; IL35B; IL-27B

UNIPROT ID: Q14213 (Gene Accession - BC015364)

Background: This gene was identified by its induced expression in B lymphocytes in response Epstein-Barr virus infection. It encodes a secreted glycoprotein belonging to the hematopoietin receptor family, and heterodimerizes with a 28 kDa protein to form interleukin 27 (IL-27). IL-27 regulates T cell and inflammatory responses, in part by activating the Jak/STAT pathway of CD4+ T cells.

Immunogen: Fusion protein of human EBI3

Applications: ELISA, WB, IHC

Recommended Dilutions: IHC: 100-300;WB: 500-2000;ELISA: 5000-10000

Host Species: Rabbit

Clonality: Rabbit Polyclonal

Isotype: Immunogen-specific rabbit IgG

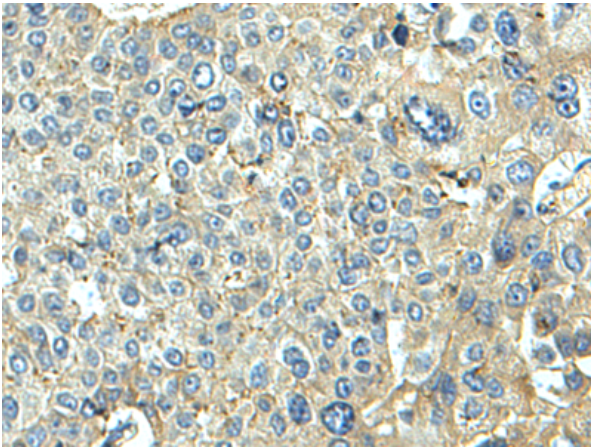
Purification: Antigen affinity purification

Species Reactivity: Human, Mouse

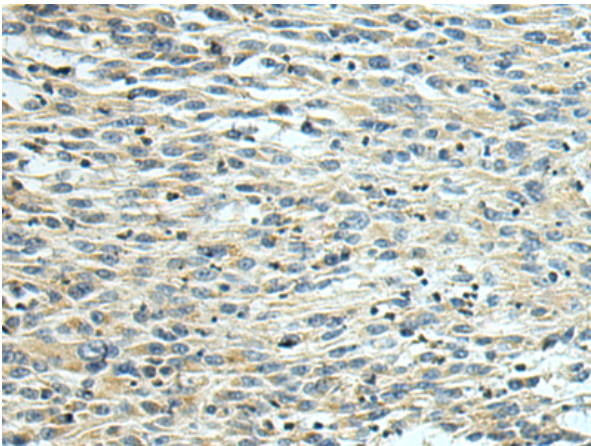
Constituents: PBS (without Mg²⁺ and Ca²⁺), pH 7.4, 150 mM NaCl, 0.05% Sodium Azide and 40% glycerol

Research Areas: Immunology

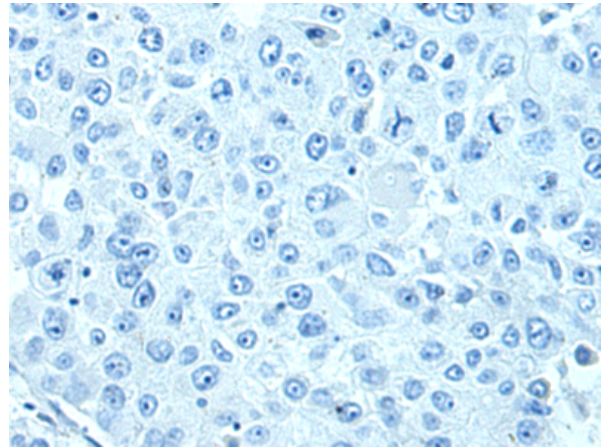
Storage & Shipping: Store at -20°C. Avoid repeated freezing and thawing



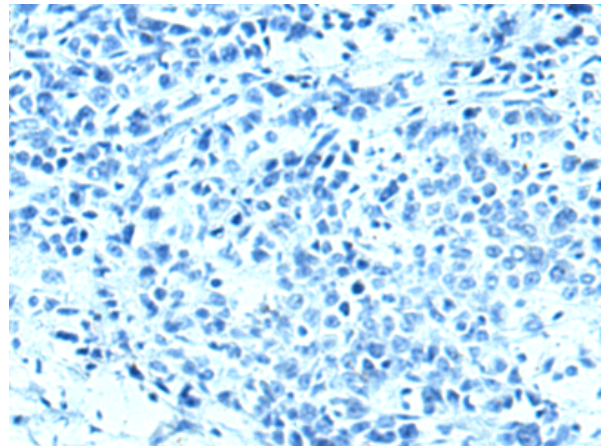
Immunohistochemistry analysis of paraffin embedded Human liver cancer tissue using 218197 (EBI3 Antibody) at a dilution of 1/120 (Secreted).



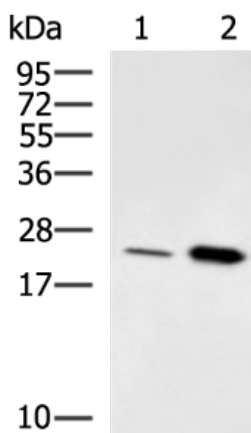
The image on the left is immunohistochemistry of paraffin-embedded Human colorectal cancer tissue using 218197 (Anti-EBI3 Antibody) at a dilution of 1/120.



In comparison with the IHC on the left, the same paraffin-embedded Human liver cancer tissue is first treated with the fusion protein and then with 218197 (Anti-EBI3 Antibody) at dilution 1/120.



In comparison with the IHC on the left, the same paraffin-embedded Human colorectal cancer tissue is first treated with fusion protein and then with D223916 (Anti-EBI3 Antibody) at dilution 1/120.



Gel: 12% SDS-PAGE, Lysate: 40 µg;
 Lane 1-2: 293T cell, Mouse kidney tissue lysates;
 Primary antibody: 218197 (EBI3 Antibody) at dilution 1/400;
 Secondary antibody: HRP-conjugated Goat anti rabbit IgG at 1/5000 dilution;
 Exposure time: 3 minutes



Product Description

Pioneering GTPase and Oncogene Product Development since 2010
