

## ECE1 RABBIT PAB

**Cat.#:** S216483

**Product Name:** Anti-ECE1 Rabbit Polyclonal Antibody

**Synonyms:** ECE

**UNIPROT ID:** P42892 (Gene Accession - BC117256 )

**Background:** The protein encoded by this gene is involved in proteolytic processing of endothelin precursors to biologically active peptides. Mutations in this gene are associated with Hirschsprung disease, cardiac defects and autonomic dysfunction. Alternatively spliced transcript variants encoding different isoforms have been noted for this gene.

**Immunogen:** Fusion protein of human ECE1

**Applications:** ELISA, IHC

**Recommended Dilutions:** IHC: 50-200; ELISA: 1000-5000

**Host Species:** Rabbit

**Clonality:** Rabbit Polyclonal

**Isotype:** Immunogen-specific rabbit IgG

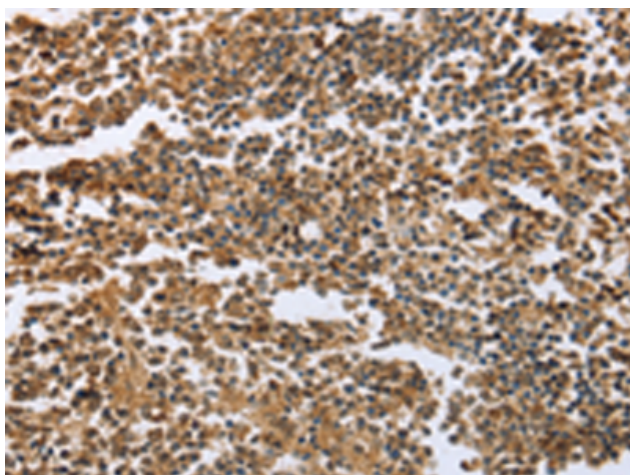
**Purification:** Antigen affinity purification

**Species Reactivity:** Human, Mouse, Rat

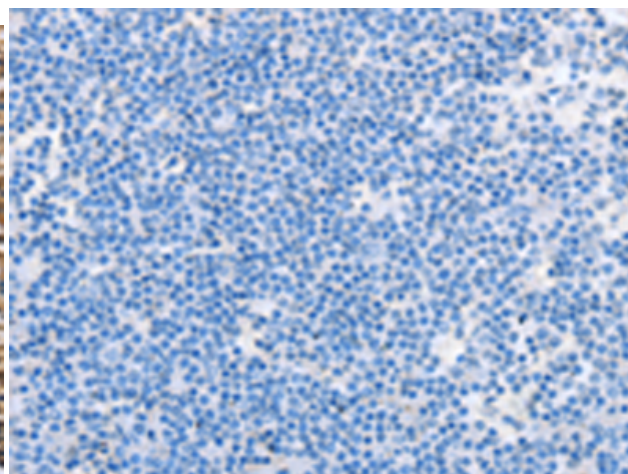
**Constituents:** PBS (without Mg<sup>2+</sup> and Ca<sup>2+</sup>), pH 7.4, 150 mM NaCl, 0.05% Sodium Azide and 40% glycerol

**Research Areas:** Signal Transduction, Cancer, Cardiovascular, Metabolism

**Storage & Shipping:** Store at -20°C. Avoid repeated freezing and thawing



Immunohistochemistry analysis of paraffin embedded Human tonsil tissue using 216483(ECE1 Antibody) at a dilution of 1/60(Cytoplasm).



In comparison with the IHC on the left, the same paraffin-embedded Human tonsil tissue is first treated with the fusion protein and then with 216483(Anti-ECE1 Antibody) at dilution 1/60.