

EDEM3 RABBIT PAB

Cat.#: S222169

Product Name: Anti-EDEM3 Rabbit Polyclonal Antibody

Synonyms: Clorf22

UNIPROT ID: Q9BZQ6 (Gene Accession - NP_079467)

Background: Quality control in the endoplasmic reticulum (ER) ensures that only properly folded proteins are retained in the cell through recognition and degradation of misfolded or unassembled proteins. EDEM3 belongs to a group of proteins that accelerate degradation of misfolded glycoproteins in the ER (Hirao et al., 2006 [PubMed 16431915]).

Immunogen: Synthetic peptide of human EDEM3

Applications: ELISA, IHC

Recommended Dilutions: IHC: 25-100; ELISA: 500-1000

Host Species: Rabbit

Clonality: Rabbit Polyclonal

Isotype: Immunogen-specific rabbit IgG

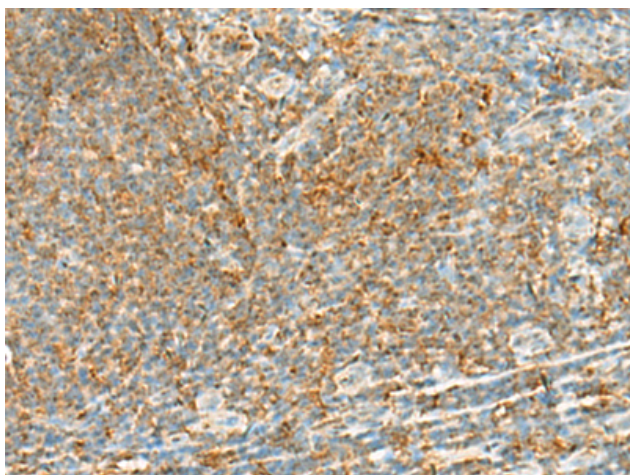
Purification: Antigen affinity purification

Species Reactivity: Human, Mouse

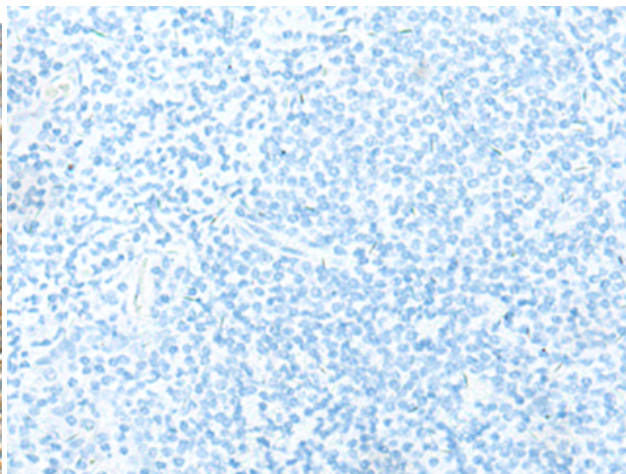
Constituents: PBS (without Mg²⁺ and Ca²⁺), pH 7.4, 150 mM NaCl, 0.05% Sodium Azide and 40% glycerol

Research Areas: Signal Transduction

Storage & Shipping: Store at -20°C. Avoid repeated freezing and thawing



Immunohistochemistry analysis of paraffin embedded Human tonsil tissue using 222169(EDEM3 Antibody) at a dilution of 1/35(Cytoplasm).



In comparison with the IHC on the left, the same paraffin-embedded Human tonsil tissue is first treated with the synthetic peptide and then with 222169(Anti-EDEM3 Antibody) at dilution 1/35.