

## EDIL3 RABBIT PAB

**Cat.#:** S217385

**Product Name:** Anti-EDIL3 Rabbit Polyclonal Antibody

**Synonyms:** DEL1

**UNIPROT ID:** O43854 (Gene Accession - BC030828 )

**Background:** The protein encoded by this gene is an integrin ligand. It plays an important role in mediating angiogenesis and may be important in vessel wall remodeling and development. It also influences endothelial cell behavior.

**Immunogen:** Fusion protein of human EDIL3

**Applications:** ELISA, WB, IHC

**Recommended Dilutions:** IHC: 100-300;WB: 500-2000;ELISA: 5000-10000

**Host Species:** Rabbit

**Clonality:** Rabbit Polyclonal

**Isotype:** Immunogen-specific rabbit IgG

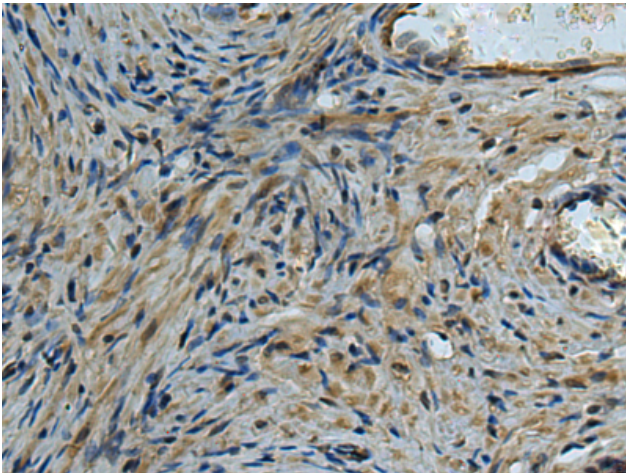
**Purification:** Antigen affinity purification

**Species Reactivity:** Human, Mouse

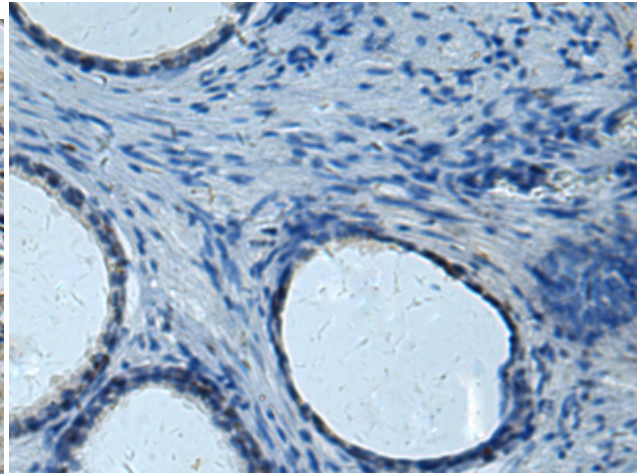
**Constituents:** PBS (without Mg<sup>2+</sup> and Ca<sup>2+</sup>), pH 7.4, 150 mM NaCl, 0.05% Sodium Azide and 40% glycerol

**Research Areas:** Signal Transduction, Cardiovascular

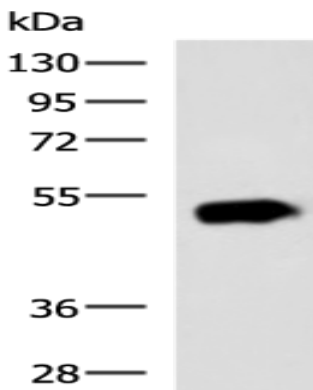
**Storage & Shipping:** Store at -20°C. Avoid repeated freezing and thawing



Immunohistochemistry analysis of paraffin embedded Human prostate cancer tissue using 217385(EDIL3 Antibody) at a dilution of 1/85(Secreted).



In comparison with the IHC on the left, the same paraffin-embedded Human prostate cancer tissue is first treated with the fusion protein and then with 217385(Anti-EDIL3 Antibody) at dilution 1/85.



Gel: 8%SDS-PAGE, Lysate: 40 µg;  
Lane: Human pancreas tissue lysate;  
Primary antibody: 217385(EDIL3 Antibody) at dilution 1/700;  
Secondary antibody: HRP-conjugated Goat anti rabbit IgG at 1/5000 dilution;  
Exposure time: 1 minute