

EDN1 RABBIT PAB

Cat.#: S210306

Product Name: Anti-EDN1 Rabbit Polyclonal Antibody

Synonyms: ET1; PPET1; HDLCQ7

UNIPROT ID: P05305 (Gene Accession - BC009720)

Background: The protein encoded by this gene is proteolytically processed to release a secreted peptide termed endothelin 1. This peptide is a potent vasoconstrictor and is produced by vascular endothelial cells. Endothelin 1 also can affect the central nervous system. Two transcript variants encoding different isoforms have been found for this gene.

Immunogen: Fusion protein of human EDN1

Applications: ELISA, IHC

Recommended Dilutions: IHC: 50-200; ELISA: 2000-5000

Host Species: Rabbit

Clonality: Rabbit Polyclonal

Isotype: Immunogen-specific rabbit IgG

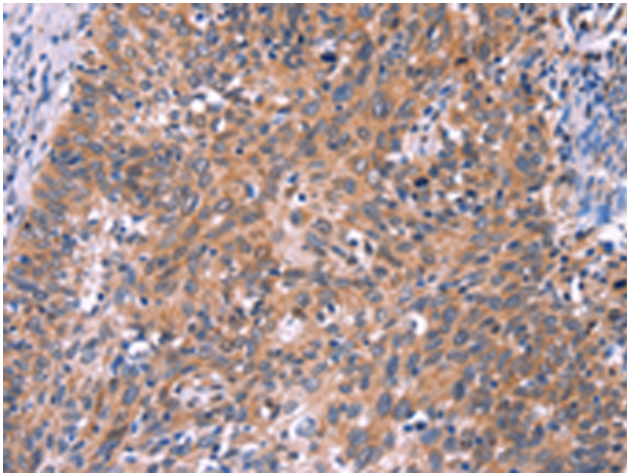
Purification: Antigen affinity purification

Species Reactivity: Human

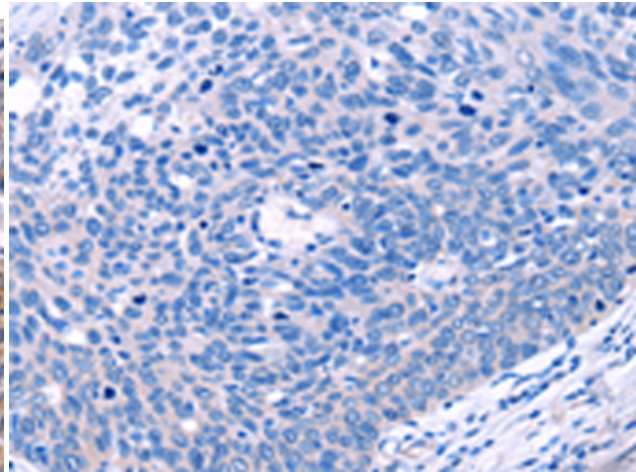
Constituents: PBS (without Mg²⁺ and Ca²⁺), pH 7.4, 150 mM NaCl, 0.05% Sodium Azide and 40% glycerol

Research Areas: Signal Transduction, Cancer, Cardiovascular, Metabolism

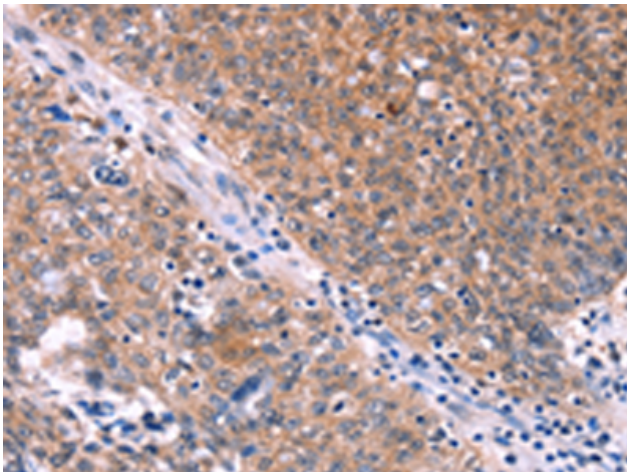
Storage & Shipping: Store at -20°C. Avoid repeated freezing and thawing



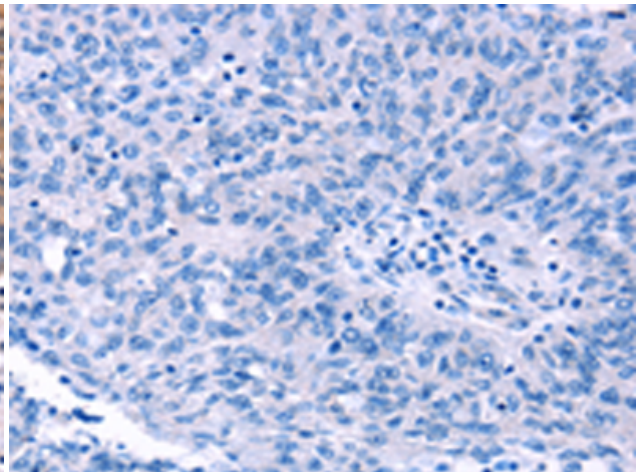
Immunohistochemistry analysis of paraffin embedded Human cervical cancer tissue using 210306(EDN1 Antibody) at a dilution of 1/50(Cytoplasm).



In comparison with the IHC on the left, the same paraffin-embedded Human cervical cancer tissue is first treated with the fusion protein and then with 210306(Anti-EDN1 Antibody) at dilution 1/50.



The image on the left is immunohistochemistry of paraffin-embedded Human ovarian cancer tissue using 210306(Anti-EDN1 Antibody) at a dilution of 1/50.



In comparison with the IHC on the left, the same paraffin-embedded Human ovarian cancer tissue is first treated with fusion protein and then with D120614(Anti-EDN1 Antibody) at dilution 1/50.