

## EEF1D RABBIT PAB

**Cat.#:** S219166

**Product Name:** Anti-EEF1D Rabbit Polyclonal Antibody

**Synonyms:** EF1D; EF-1D; FP1047

**UNIPROT ID:** P29692 (Gene Accession - BC007847)

**Background:** This gene encodes a subunit of the elongation factor-1 complex which is responsible for the enzymatic delivery of aminoacyl tRNAs to the ribosome. This subunit, delta, functions as guanine nucleotide exchange factor. It is reported that following HIV-1 infection, this subunit interacts with HIV-1 Tat. This interaction results in repression of translation of host cell proteins and enhanced translation of viral proteins. Several alternatively spliced transcript variants encoding multiple isoforms have been found for this gene. Related pseudogenes have been defined on chromosomes 1, 6, 7, 9, 11, 13, 17, 19.

**Immunogen:** Fusion protein of human EEF1D

**Applications:** ELISA, WB, IHC

**Recommended Dilutions:** IHC: 50-300;WB: 1000-5000;ELISA: 5000-10000

**Host Species:** Rabbit

**Clonality:** Rabbit Polyclonal

**Isotype:** Immunogen-specific rabbit IgG

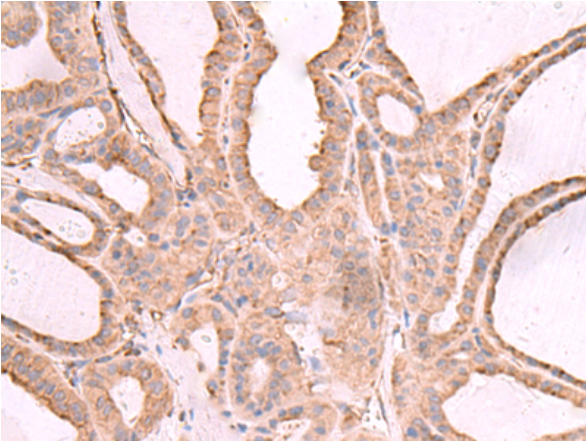
**Purification:** Antigen affinity purification

**Species Reactivity:** Human, Mouse, Rat

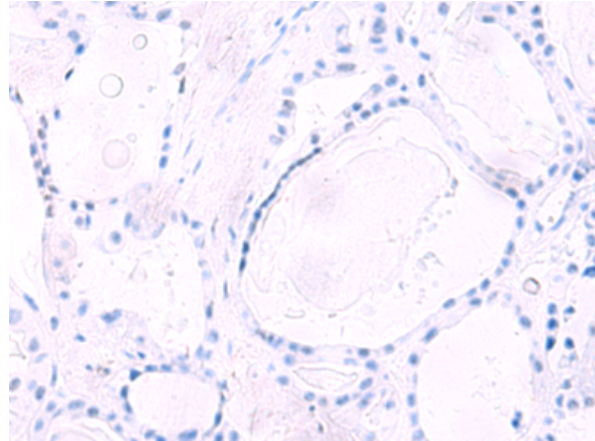
**Constituents:** PBS (without Mg<sup>2+</sup> and Ca<sup>2+</sup>), pH 7.4, 150 mM NaCl, 0.05% Sodium Azide and 40% glycerol

**Research Areas:** Signal Transduction, Epigenetics and Nuclear Signaling

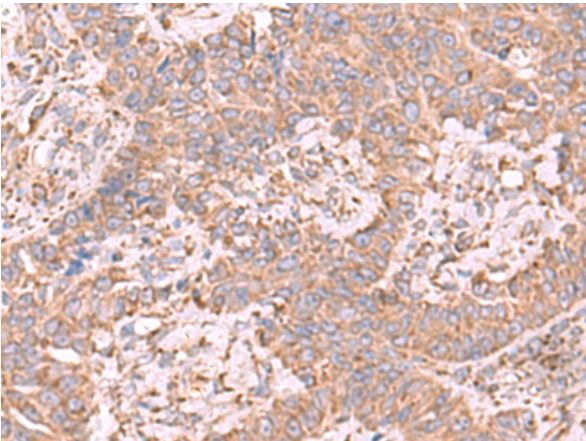
**Storage & Shipping:** Store at -20°C. Avoid repeated freezing and thawing



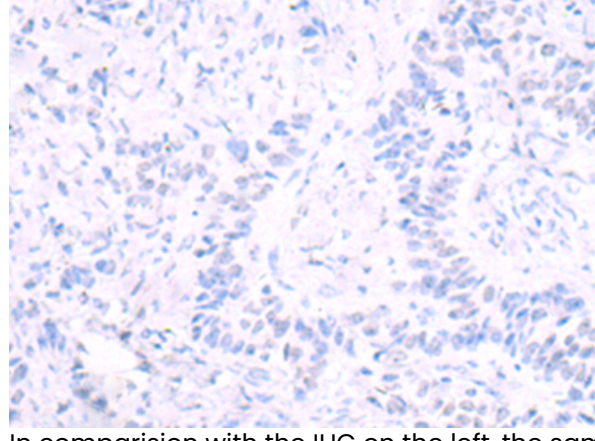
Immunohistochemistry analysis of paraffin embedded Human thyroid cancer tissue using 219166 (EEF1D Antibody) at a dilution of 1/65 (Cytoplasm).



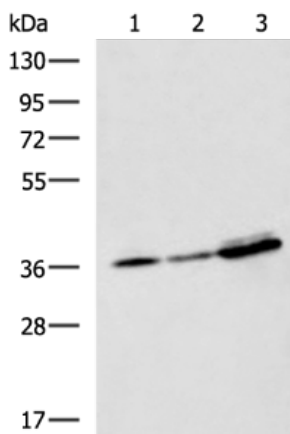
In comparison with the IHC on the left, the same paraffin-embedded Human thyroid cancer tissue is first treated with the fusion protein and then with 219166 (Anti-EEF1D Antibody) at dilution 1/65.



The image on the left is immunohistochemistry of paraffin-embedded Human ovarian cancer tissue using 219166 (Anti-EEF1D Antibody) at a dilution of 1/65.



In comparison with the IHC on the left, the same paraffin-embedded Human ovarian cancer tissue is first treated with fusion protein and then with D225955 (Anti-EEF1D Antibody) at dilution 1/65.



Gel: 8% SDS-PAGE, Lysate: 40 µg;  
Lane 1-3: A549, A172 and HepG2 cell lysates;  
Primary antibody: 219166 (EEF1D Antibody) at dilution 1/950;  
Secondary antibody: HRP-conjugated Goat anti rabbit IgG at 1/5000 dilution;  
Exposure time: 3 seconds



# Product Description

Pioneering GTPase and Oncogene Product Development since 2010

---