

## EEF1E1 RABBIT PAB

**Cat.#:** S218161

**Product Name:** Anti-EEF1E1 Rabbit Polyclonal Antibody

**Synonyms:** P18; AIMP3

**UNIPROT ID:** O43324 (Gene Accession - BC005291)

**Background:** This gene encodes a multifunctional protein that localizes to both the cytoplasm and nucleus. In the cytoplasm, the encoded protein is an auxiliary component of the macromolecular aminoacyl-tRNA synthase complex. However, its mouse homolog has been shown to translocate to the nucleus in response to DNA damage, and it plays a positive role in ATM/ATR-mediated p53 activation. Alternative splicing results in multiple transcript variants.

**Immunogen:** Full length fusion protein

**Applications:** ELISA, WB, IHC

**Recommended Dilutions:** IHC: 25-100;WB: 500-2000;ELISA: 5000-10000

**Host Species:** Rabbit

**Clonality:** Rabbit Polyclonal

**Isotype:** Immunogen-specific rabbit IgG

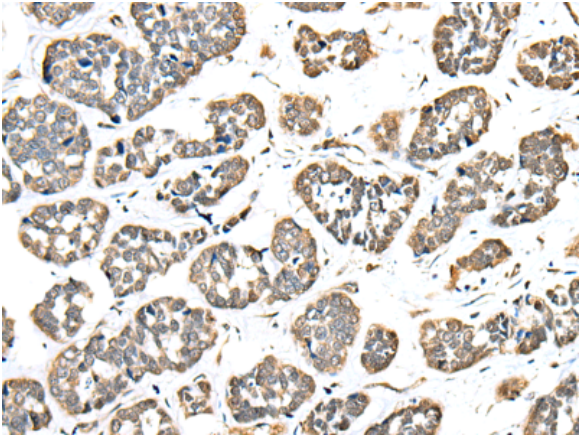
**Purification:** Antigen affinity purification

**Species Reactivity:** Human, Mouse

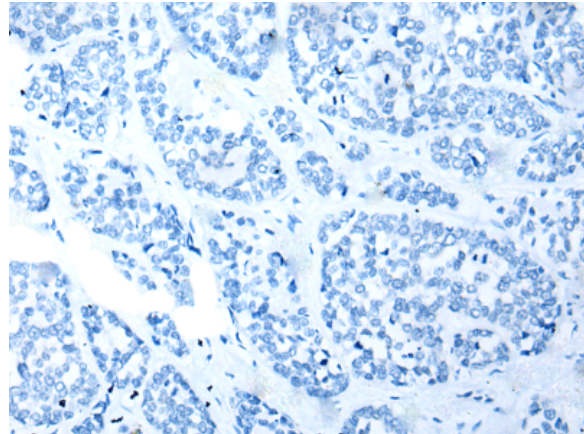
**Constituents:** PBS (without Mg<sup>2+</sup> and Ca<sup>2+</sup>), pH 7.4, 150 mM NaCl, 0.05% Sodium Azide and 40% glycerol

**Research Areas:** Cancer

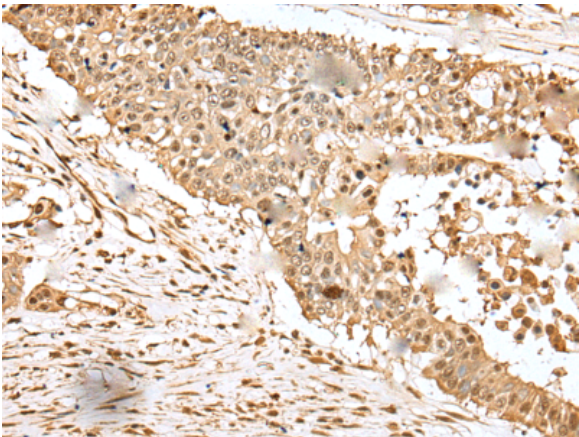
**Storage & Shipping:** Store at -20°C. Avoid repeated freezing and thawing



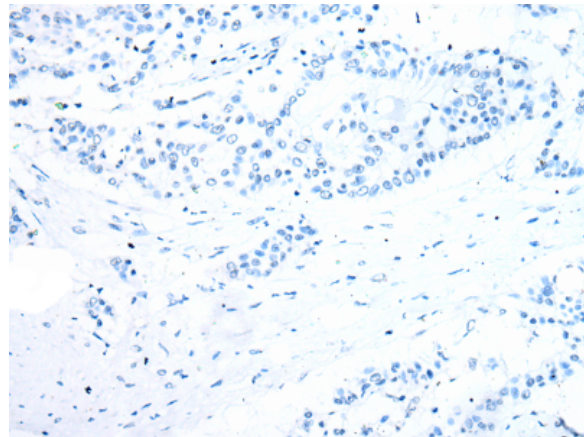
Immunohistochemistry analysis of paraffin embedded Human esophagus cancer tissue using 218161(EEF1E1 Antibody) at a dilution of 1/35(Cytoplasm or Nucleus).



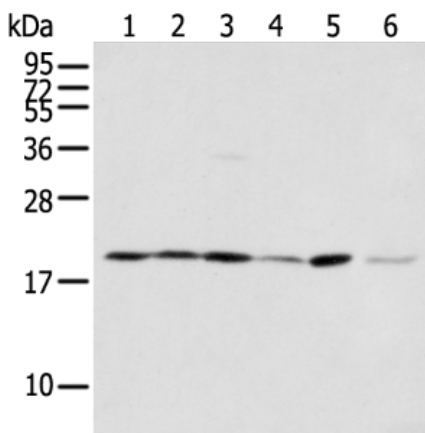
In comparison with the IHC on the left, the same paraffin-embedded Human esophagus cancer tissue is first treated with the fusion protein and then with 218161(Anti-EEF1E1 Antibody) at dilution 1/35.



The image on the left is immunohistochemistry of paraffin-embedded Human colorectal cancer tissue using 218161(Anti-EEF1E1 Antibody) at a dilution of 1/35.



In comparison with the IHC on the left, the same paraffin-embedded Human colorectal cancer tissue is first treated with fusion protein and then with D223851(Anti-EEF1E1 Antibody) at dilution 1/35.



Gel: 12%SDS-PAGE, Lysate: 40 µg;  
 Lane 1-6: A549 cell, Jurkat cell, Human testis tissue, 293T cell, Hepg2 cell and A431 cell;  
 Primary antibody: 218161(EEF1E1 Antibody) at dilution 1/400;  
 Secondary antibody: Goat anti rabbit IgG at 1/8000 dilution;  
 Exposure time: 2 seconds



# Product Description

Pioneering GTPase and Oncogene Product Development since 2010

---