

## EEF2 RABBIT PAB

**Cat.#:** S217386

**Product Name:** Anti-EEF2 Rabbit Polyclonal Antibody

**Synonyms:** EF2; EF-2; EEF-2; SCA26

**UNIPROT ID:** P13639 (Gene Accession - BC126259 )

**Background:** This gene encodes a member of the GTP-binding translation elongation factor family. This protein is an essential factor for protein synthesis. It promotes the GTP-dependent translocation of the nascent protein chain from the A-site to the P-site of the ribosome. This protein is completely inactivated by EF-2 kinase phosphorylation.

**Immunogen:** Fusion protein of human EEF2

**Applications:** ELISA, WB, IHC

**Recommended Dilutions:** IHC: 50-200;WB: 1000-5000;ELISA: 5000-10000

**Host Species:** Rabbit

**Clonality:** Rabbit Polyclonal

**Isotype:** Immunogen-specific rabbit IgG

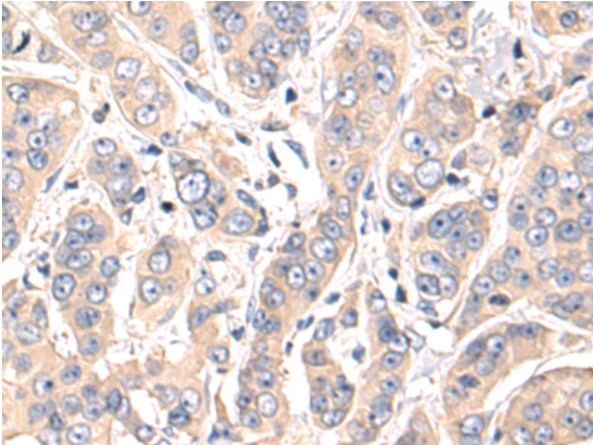
**Purification:** Antigen affinity purification

**Species Reactivity:** Human, Mouse, Rat

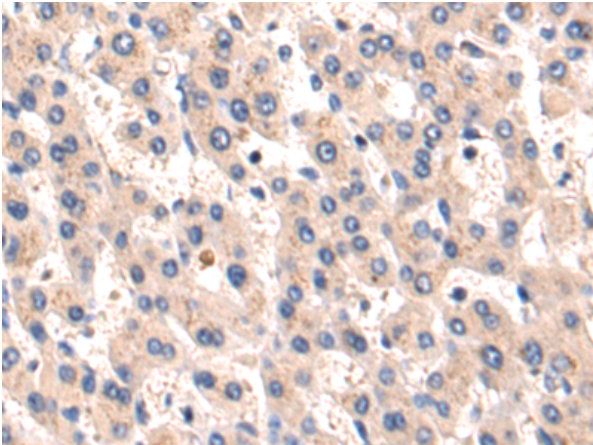
**Constituents:** PBS (without Mg<sup>2+</sup> and Ca<sup>2+</sup>), pH 7.4, 150 mM NaCl, 0.05% Sodium Azide and 40% glycerol

**Research Areas:** Epigenetics and Nuclear Signaling

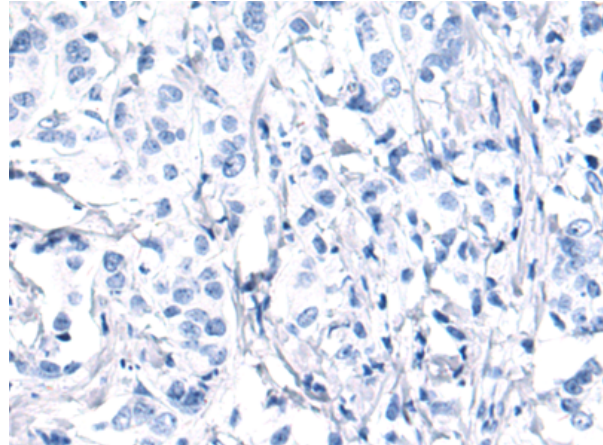
**Storage & Shipping:** Store at -20°C. Avoid repeated freezing and thawing



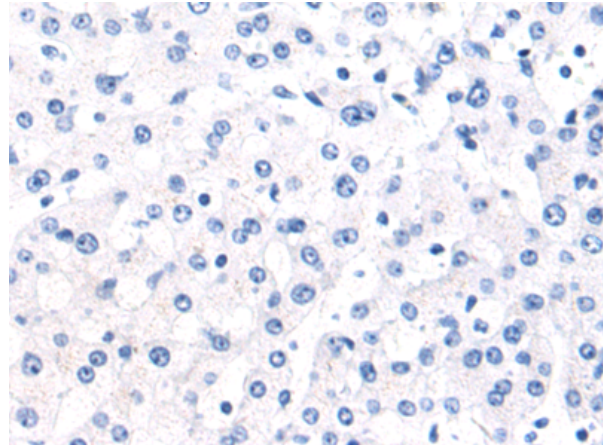
Immunohistochemistry analysis of paraffin embedded Human breast cancer tissue using 217386(EEF2 Antibody) at a dilution of 1/80(Cytoplasm).



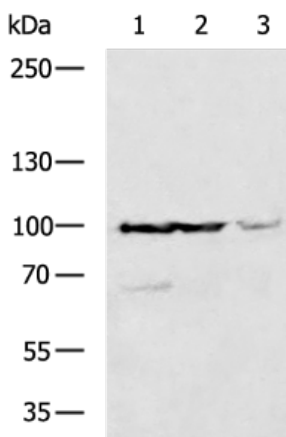
The image on the left is immunohistochemistry of paraffin-embedded Human liver cancer tissue using 217386(Anti-EEF2 Antibody) at a dilution of 1/80.



In comparison with the IHC on the left, the same paraffin-embedded Human breast cancer tissue is first treated with the fusion protein and then with 217386(Anti-EEF2 Antibody) at dilution 1/80.



In comparison with the IHC on the left, the same paraffin-embedded Human liver cancer tissue is first treated with fusion protein and then with D222274(Anti-EEF2 Antibody) at dilution 1/80.



Gel: 6%SDS-PAGE, Lysate:40 µg;  
 Lane 1-3: HeLa, 293T, LOVO cell lysates;  
 Primary antibody: 217386(EEF2 Antibody) at dilution 1/1350;  
 Secondary antibody: HRP-conjugated Goat anti rabbit IgG at 1/5000 dilution;  
 Exposure time: 20 seconds



# Product Description

Pioneering GTPase and Oncogene Product Development since 2010

---