

## EEPDI RABBIT PAB

**Cat.#:** S215699

**Product Name:** Anti-EEPDI Rabbit Polyclonal Antibody

**Synonyms:** HSPC107

**UNIPROT ID:** Q7L9B9 (Gene Accession - NP\_085139 )

**Background:** EEPDI(endonuclease/exonuclease/phosphatase family domain containing 1), also known as HSPC107, is a 569 amino acid protein that contains one HhH domain. A significant decrease in the relative transcriptional level of EEPDI is induced by long-term heat stress exposure. Conversely, EEPDI is up-regulated in bovine adipogenic processes related to intramuscular pre-adipocyte differentiation. Encoded by a gene that maps to human chromosome 7p14.2, EEPDI plays a role in DNA binding and repair. Chromosome 7 makes up about 5% of the human genome and contains 158 million bases encoding more than 1,000 genes. Osteogenesis imperfecta, Pendred syndrome, Lissencephaly, Citrullinemia and Shwachman-Diamond syndrome are associated with Chromosome 7.

**Immunogen:** Synthetic peptide of human EEPDI

**Applications:** ELISA, WB, IHC

**Recommended Dilutions:** IHC: 20-100;WB: 200-1000;ELISA: 5000-10000

**Host Species:** Rabbit

**Clonality:** Rabbit Polyclonal

**Isotype:** Immunogen-specific rabbit IgG

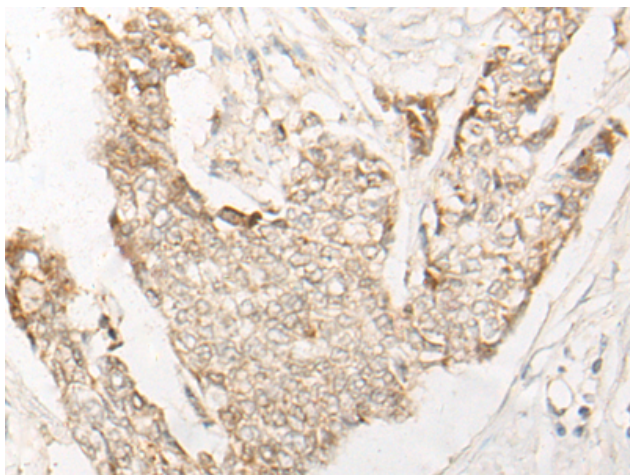
**Purification:** Antigen affinity purification

**Species Reactivity:** Human, Mouse

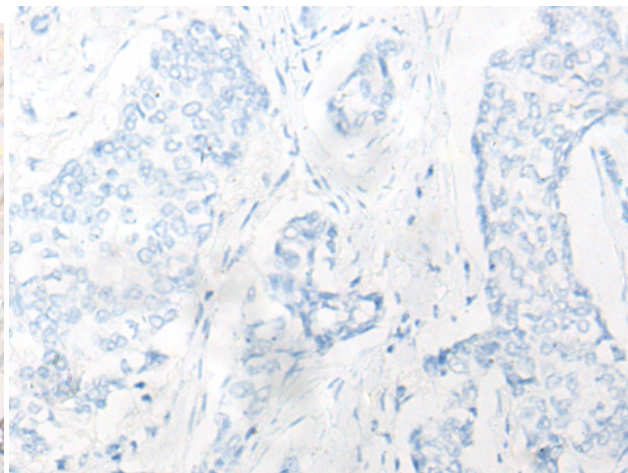
**Constituents:** PBS (without Mg<sup>2+</sup> and Ca<sup>2+</sup>), pH 7.4, 150 mM NaCl, 0.05% Sodium Azide and 40% glycerol

**Research Areas:** Epigenetics and Nuclear Signaling

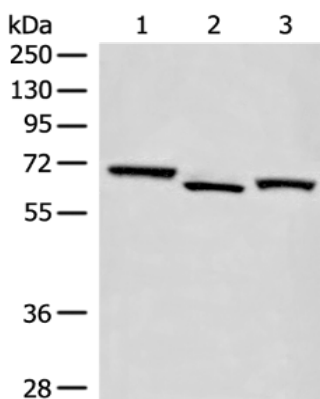
**Storage & Shipping:** Store at -20°C. Avoid repeated freezing and thawing



Immunohistochemistry analysis of paraffin embedded Human breast cancer tissue using 215699(EEPD1 Antibody) at a dilution of 1/20(Nucleus).



In comparison with the IHC on the left, the same paraffin-embedded Human breast cancer tissue is first treated with the synthetic peptide and then with 215699(Anti-EEPD1 Antibody) at dilution 1/20.



Gel: 8%SDS-PAGE, Lysate: 40  $\mu$ g;  
 Lane 1-3: PC-3 cell, Human cerebrum tissue,  
 231 cell lysates;  
 Primary antibody: 215699(EEPD1 Antibody) at  
 dilution 1/300;  
 Secondary antibody: Goat anti rabbit IgG at  
 1/8000 dilution;  
 Exposure time: 30 seconds