

## EFCAB5 RABBIT PAB

**Cat.#:** S215700

**Product Name:** Anti-EFCAB5 Rabbit Polyclonal Antibody

**Synonyms:**

**UNIPROT ID:** A4FU69 (Gene Accession - NP\_940931)

**Background:** EF-CAB5 (EF-hand calcium-binding domain-containing protein 5) is a 1,503 amino acid protein containing one EF-hand domain. Existing as four alternatively spliced isoforms, the gene encoding EF-CAB5 maps to human chromosome 17q11.2. Chromosome 17 makes up over 2.5% of the human genome with about 81 million bases encoding over 1,200 genes. Two key tumor suppressor genes are associated with chromosome 17, namely p53 and BRCA1. Tumor suppressor p53 is necessary for maintenance of cellular genetic integrity by moderating cell fate through DNA repair versus cell death. Malfunction or loss of p53 expression is associated with malignant cell growth and LiFraumeni syndrome. Like p53, BRCA1 is directly involved in DNA repair, specifically it is recognized as a genetic determinant of early onset breast cancer and predisposition to cancers of the ovary, colon, prostate gland and fallopian tubes. Alexander disease, Birt-Hogg-Dube syndrome and Canavan disease are also associated with chromosome 17.

**Immunogen:** Synthetic peptide of human EFCAB5

**Applications:** ELISA, IHC

**Recommended Dilutions:** IHC: 25-100; ELISA: 5000-10000

**Host Species:** Rabbit

**Clonality:** Rabbit Polyclonal

**Isotype:** Immunogen-specific rabbit IgG

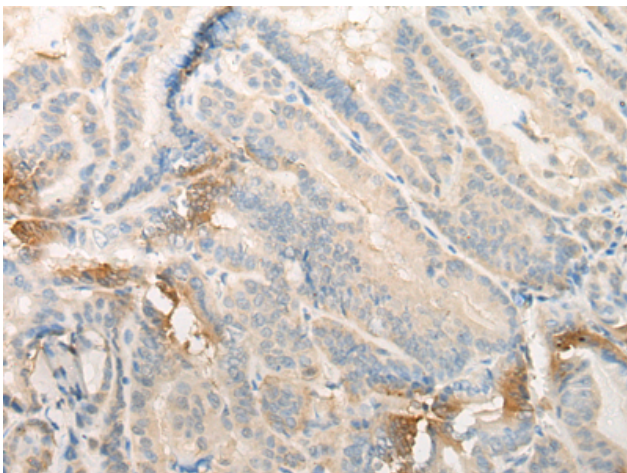
**Purification:** Antigen affinity purification

**Species Reactivity:** Human

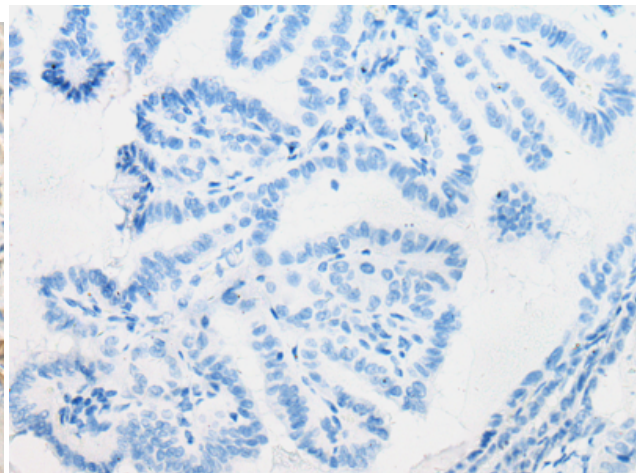
**Constituents:** PBS (without Mg<sup>2+</sup> and Ca<sup>2+</sup>), pH 7.4, 150 mM NaCl, 0.05% Sodium Azide and 40% glycerol

**Research Areas:** Signal Transduction

**Storage & Shipping:** Store at -20°C. Avoid repeated freezing and thawing



Immunohistochemistry analysis of paraffin embedded Human thyroid cancer tissue using 215700 (EFCAB5 Antibody) at a dilution of 1/20 (Cytoplasm).



In comparison with the IHC on the left, the same paraffin-embedded Human thyroid cancer tissue is first treated with the synthetic peptide and then with 215700 (Anti-EFCAB5 Antibody) at dilution 1/20.



# Product Description

Pioneering GTPase and Oncogene Product Development since 2010

---