

EFHC2 RABBIT PAB

Cat.#: S219408

Product Name: Anti-EFHC2 Rabbit Polyclonal Antibody

Synonyms: MRX74; dJ1158H2.1

UNIPROT ID: Q5JST6 (Gene Accession - BC031039)

Background: This gene encodes a protein which contains three DM10 domains and three calcium-binding EF-hand motifs. A related protein is encoded by a gene on chromosome 6. It has been suggested that both proteins are involved in the development of epilepsy (PMID: 15258581, 16112844) and that this gene may be associated with fear recognition in individuals with Turner syndrome. [provided by RefSeq, Aug 2011]

Immunogen: Fusion protein of human EFHC2

Applications: ELISA, IHC

Recommended Dilutions: IHC: 200-300; ELISA: 5000-10000

Host Species: Rabbit

Clonality: Rabbit Polyclonal

Isotype: Immunogen-specific rabbit IgG

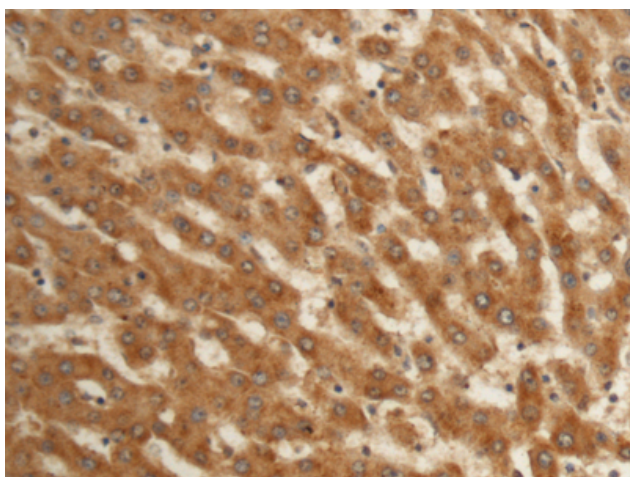
Purification: Antigen affinity purification

Species Reactivity: Human

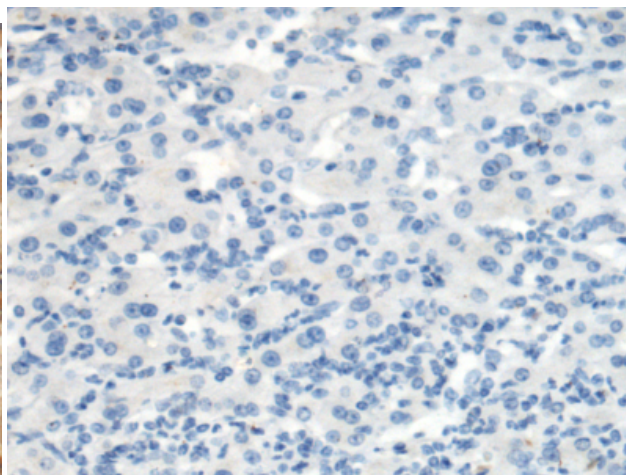
Constituents: PBS (without Mg²⁺ and Ca²⁺), pH 7.4, 150 mM NaCl, 0.05% Sodium Azide and 40% glycerol

Research Areas: Cell Biology

Storage & Shipping: Store at -20°C. Avoid repeated freezing and thawing



Immunohistochemistry analysis of paraffin embedded Human liver cancer tissue using 219408(EFHC2 Antibody) at a dilution of 1/150(Cytoplasm).



In comparison with the IHC on the left, the same paraffin-embedded Human liver cancer tissue is first treated with the fusion protein and then with 219408(Anti-EFHC2 Antibody) at dilution 1/150.