

EFHD2 RABBIT PAB

Cat.#: S221931

Product Name: Anti-EFHD2 Rabbit Polyclonal Antibody

Synonyms: SWS1

UNIPROT ID: Q96C19 (Gene Accession - NP_077305)

Background: May regulate B-cell receptor (BCR)-induced immature and primary B-cell apoptosis. Plays a role as negative regulator of the canonical NF-kappa-B-activating branch. Controls spontaneous apoptosis through the regulation of BCL2L1 abundance.

Immunogen: Synthetic peptide of human EFHD2

Applications: ELISA, WB, IHC

Recommended Dilutions: IHC: 20-100;WB: 200-1000;ELISA: 5000-10000

Host Species: Rabbit

Clonality: Rabbit Polyclonal

Isotype: Immunogen-specific rabbit IgG

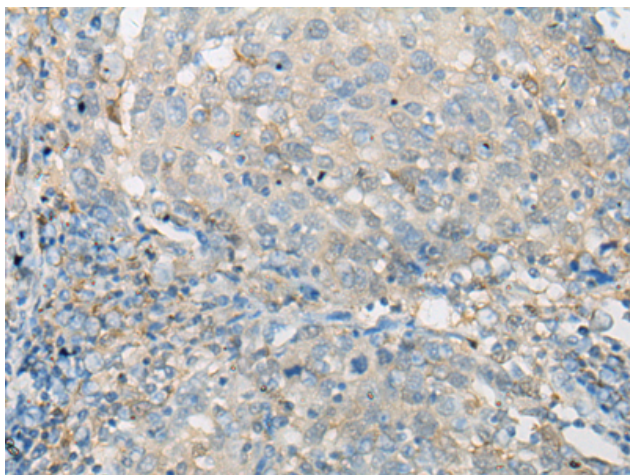
Purification: Antigen affinity purification

Species Reactivity: Human, Mouse, Rat

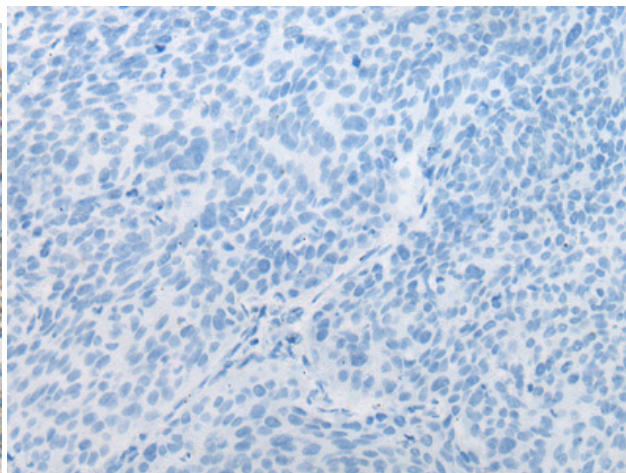
Constituents: PBS (without Mg²⁺ and Ca²⁺), pH 7.4, 150 mM NaCl, 0.05% Sodium Azide and 40% glycerol

Research Areas: Signal Transduction

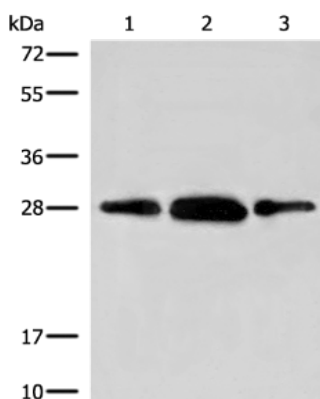
Storage & Shipping: Store at -20°C. Avoid repeated freezing and thawing



Immunohistochemistry analysis of paraffin embedded Human cervical cancer tissue using 221931 (EFHD2 Antibody) at a dilution of 1/20 (Cytoplasm and Cell membrane).



In comparison with the IHC on the left, the same paraffin-embedded Human cervical cancer tissue is first treated with the synthetic peptide and then with 221931 (Anti-EFHD2 Antibody) at dilution 1/20.



Gel: 12% SDS-PAGE, Lysate: 40 μ g;
Lane 1-3: Mouse thymus tissue, Mouse brain tissue and Human lung tissue lysates;
Primary antibody: 221931 (EFHD2 Antibody) at dilution 1/250;
Secondary antibody: Goat anti rabbit IgG at 1/8000 dilution;
Exposure time: 10 seconds