

EFTUD2 RABBIT PAB

Cat.#: S218935

Product Name: Anti-EFTUD2 Rabbit Polyclonal Antibody

Synonyms: MFDM; MFDGA; Snul14; Snrp116; SNRNP116; U5-116KD

UNIPROT ID: Q15029 (Gene Accession - BC002360)

Background: This gene encodes a GTPase which is a component of the spliceosome complex which processes precursor mRNAs to produce mature mRNAs. Mutations in this gene are associated with mandibulofacial dysostosis with microcephaly. Multiple transcript variants encoding different isoforms have been found for this gene.

Immunogen: Fusion protein of human EFTUD2

Applications: ELISA, WB, IHC

Recommended Dilutions: IHC: 50-300;WB: 500-2000;ELISA: 5000-10000

Host Species: Rabbit

Clonality: Rabbit Polyclonal

Isotype: Immunogen-specific rabbit IgG

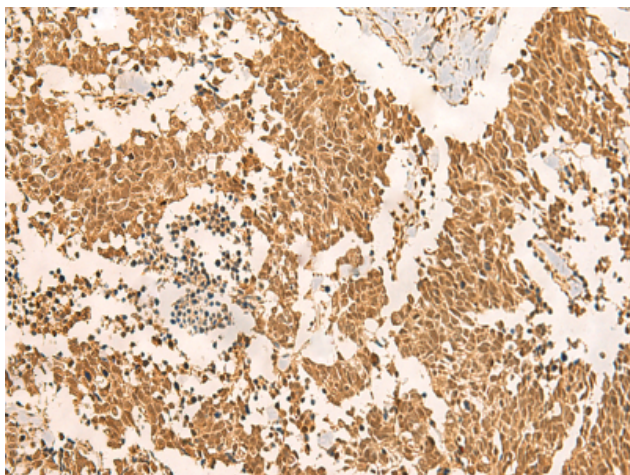
Purification: Antigen affinity purification

Species Reactivity: Human, Mouse

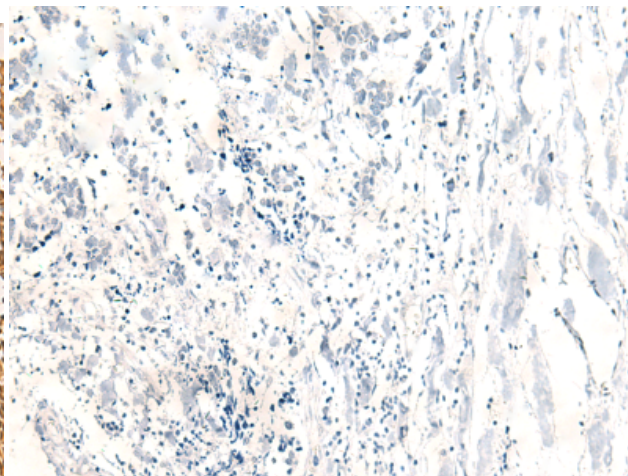
Constituents: PBS (without Mg²⁺ and Ca²⁺), pH 7.4, 150 mM NaCl, 0.05% Sodium Azide and 40% glycerol

Research Areas: Epigenetics and Nuclear Signaling

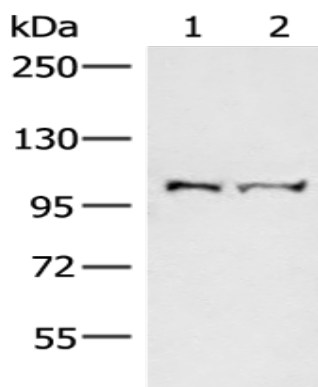
Storage & Shipping: Store at -20°C. Avoid repeated freezing and thawing



Immunohistochemistry analysis of paraffin embedded Human lung cancer tissue using 218935(EFTUD2 Antibody) at a dilution of 1/45(Nucleus).



In comparison with the IHC on the left, the same paraffin-embedded Human lung cancer tissue is first treated with the fusion protein and then with 218935(Anti-EFTUD2 Antibody) at dilution 1/45.



Gel: 6%SDS-PAGE, Lysate: 40 μ g;

Lane 1-2: Mouse brain tissue and Jurkat cell lysates;

Primary antibody: 218935(EFTUD2 Antibody) at dilution 1/550;

Secondary antibody: Goat anti rabbit IgG at 1/8000 dilution;

Exposure time: 30 seconds