

EGFL7 RABBIT PAB

Cat.#: S216485

Product Name: Anti-EGFL7 Rabbit Polyclonal Antibody

Synonyms: NEU1; ZNEU1; VE-STATIN

UNIPROT ID: Q9UHF1 (Gene Accession - BC012377)

Background: This gene encodes a secreted endothelial cell protein that contains two epidermal growth factor-like domains. The encoded protein may play a role in regulating vasculogenesis. This protein may be involved in the growth and proliferation of tumor cells. Alternate splicing results in multiple transcript variants. [provided by RefSeq, Feb 2012]

Immunogen: Fusion protein of human EGFL7

Applications: ELISA, IHC

Recommended Dilutions: IHC: 100-200; ELISA: 5000-10000

Host Species: Rabbit

Clonality: Rabbit Polyclonal

Isotype: Immunogen-specific rabbit IgG

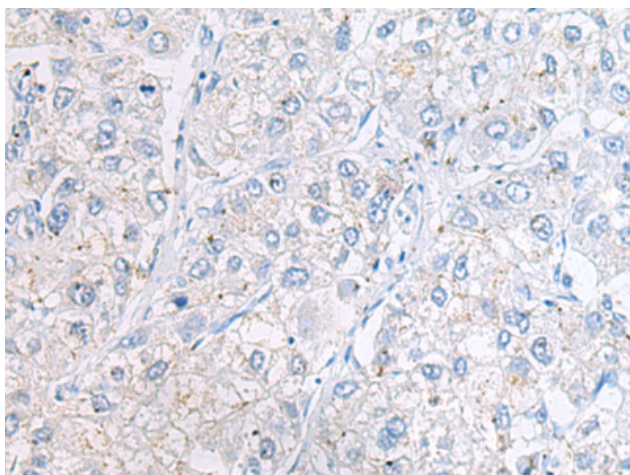
Purification: Antigen affinity purification

Species Reactivity: Human, Mouse

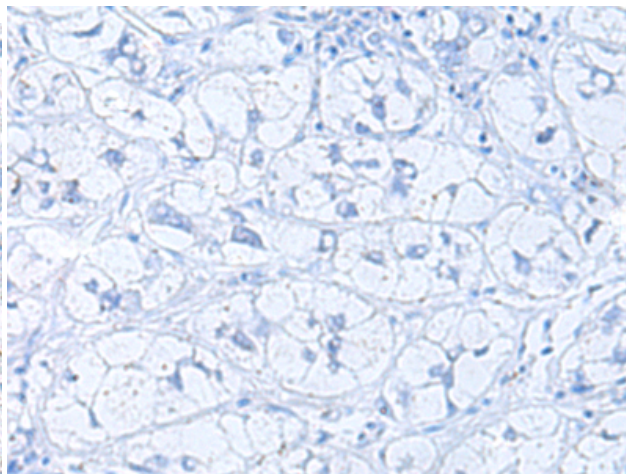
Constituents: PBS (without Mg²⁺ and Ca²⁺), pH 7.4, 150 mM NaCl, 0.05% Sodium Azide and 40% glycerol

Research Areas: Metabolism, Cardiovascular

Storage & Shipping: Store at -20°C. Avoid repeated freezing and thawing



Immunohistochemistry analysis of paraffin embedded Human liver cancer tissue using 216485(EGFL7 Antibody) at a dilution of 1/150(Cytoplasm).



In comparison with the IHC on the left, the same paraffin-embedded Human liver cancer tissue is first treated with the fusion protein and then with 216485(Anti-EGFL7 Antibody) at dilution 1/150.