

EGLN3 RABBIT PAB

Cat.#: S210553

Product Name: Anti-EGLN3 Rabbit Polyclonal Antibody

Synonyms: PHD3; HIFPH3; HIFP4H3

UNIPROT ID: Q9H6Z9 (Gene Accession - BC064924)

Background: Enables peptidyl-proline 4-dioxygenase activity. Involved in several processes, including activation of cysteine-type endopeptidase activity involved in apoptotic process; peptidyl-proline hydroxylation to 4-hydroxy-L-proline; and response to hypoxia. Located in cytosol and nucleus. Implicated in renal cell carcinoma. Biomarker of clear cell renal cell carcinoma. [provided by Alliance of Genome Resources, Apr 2022]

Immunogen: Fusion protein of human EGLN3

Applications: ELISA, IHC

Recommended Dilutions: IHC: 50-100; ELISA: 5000-10000

Host Species: Rabbit

Clonality: Rabbit Polyclonal

Isotype: Immunogen-specific rabbit IgG

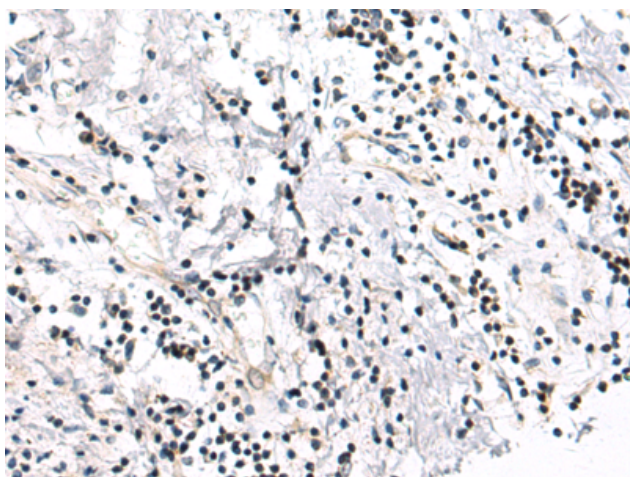
Purification: Antigen affinity purification

Species Reactivity: Human, Mouse, Rat

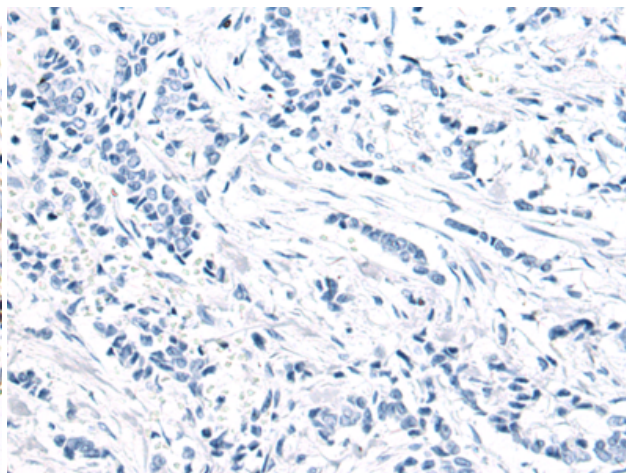
Constituents: PBS (without Mg²⁺ and Ca²⁺), pH 7.4, 150 mM NaCl, 0.05% Sodium Azide and 40% glycerol

Research Areas: Cardiovascular, Cancer, Metabolism

Storage & Shipping: Store at -20°C. Avoid repeated freezing and thawing



Immunohistochemistry analysis of paraffin embedded Human breast cancer tissue using 210553(EGLN3 Antibody) at a dilution of 1/100(Nucleus).



In comparison with the IHC on the left, the same paraffin-embedded Human breast cancer tissue is first treated with the fusion protein and then with 210553(Anti-EGLN3 Antibody) at dilution 1/100.