

## EGR1 RABBIT PAB

**Cat.#:** S216488

**Product Name:** Anti-EGR1 Rabbit Polyclonal Antibody

**Synonyms:** TIS8; AT225; G0S30; NGFI-A; ZNF225; KROX-24; ZIF-268

**UNIPROT ID:** P18146 (Gene Accession - BC073983 )

**Background:** The protein encoded by this gene belongs to the EGR family of C2H2-type zinc-finger proteins. It is a nuclear protein and functions as a transcriptional regulator. The products of target genes it activates are required for differentiation and mitogenesis. Studies suggest this is a cancer suppressor gene.

**Immunogen:** Fusion protein of human EGR1

**Applications:** ELISA, IHC

**Recommended Dilutions:** IHC: 100-300; ELISA: 5000-10000

**Host Species:** Rabbit

**Clonality:** Rabbit Polyclonal

**Isotype:** Immunogen-specific rabbit IgG

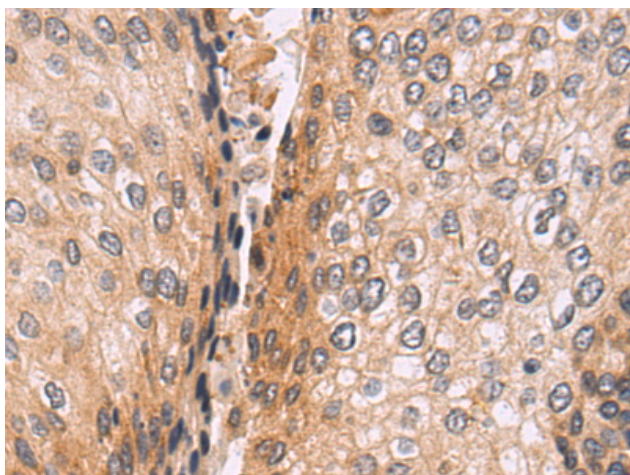
**Purification:** Antigen affinity purification

**Species Reactivity:** Human, Mouse, Rat

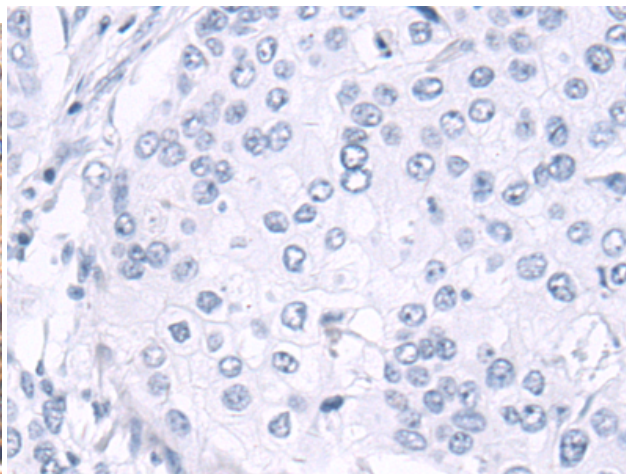
**Constituents:** PBS (without Mg<sup>2+</sup> and Ca<sup>2+</sup>), pH 7.4, 150 mM NaCl, 0.05% Sodium Azide and 40% glycerol

**Research Areas:** Epigenetics and Nuclear Signaling, Cancer

**Storage & Shipping:** Store at -20°C. Avoid repeated freezing and thawing



Immunohistochemistry analysis of paraffin embedded Human cervical cancer tissue using 216488 (EGR1 Antibody) at a dilution of 1/95 (Cytoplasm).



In comparison with the IHC on the left, the same paraffin-embedded Human cervical cancer tissue is first treated with the fusion protein and then with 216488 (Anti-EGR1 Antibody) at dilution 1/95.