

## EGR2 RABBIT PAB

**Cat.#:** N225442

**Product Name:** Anti-EGR2 Rabbit pAb

**Synonyms:** EGR2;KROX20; E3 SUMO-protein ligase EGR2;AT591;E3 SUMO-protein transferase ERG2 Curated;Early growth response protein 2 (EGR-2);Zinc finger protein Krox-20;

**UNIPROT ID:** P11161

**Background:** Sequence-specific DNA-binding transcription factor. Binds to two specific DNA sites located in the promoter region of HOXA4.

**Immunogen:** The antiserum was produced against synthesized peptide derived from human EGR1/2. AA range:371-420

**Applications:** WB,IHC-F,IHC-P,ICC/IF,ELISA

**Recommended Dilutions:** WB: 1/500-1/1000 IHC: 1/50-1/100 IF: 1/50-1/200  
ELISA: 1/10000

**Host Species:** Rabbit

**Clonality:** Rabbit Polyclonal

**Clone ID:** -

**MW:** Calculated MW: 50 kDa; Observed MW: 50 kDa

**Isotype:** IgG

**Purification:** Affinity Chromatography

**Species Reactivity:** Human,Mouse,Rat

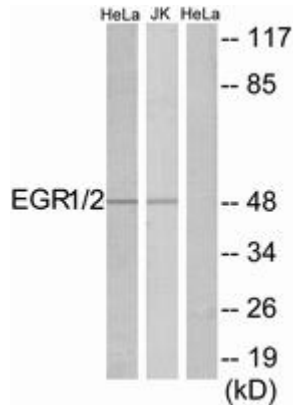
**Conjugation:** Unconjugated

**Modification:** Unmodified

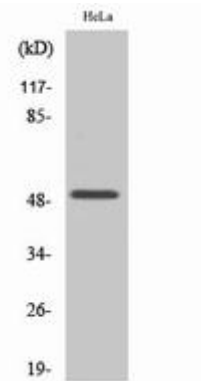
**Constituents:** PBS (without Mg<sup>2+</sup> and Ca<sup>2+</sup>), pH 7.3 containing 50% glycerol, 0.5% BSA and 0.02% sodium azide

**Research Areas:** Epigenetics and Nuclear Signaling

**Storage & Shipping:** Store at -20°C. Avoid repeated freezing and thawing



Western blot analysis of EGR2 in HeLa and Jurkat lysates using EGR1/2 antibody. The lane on the right is blocked with the synthesized peptide.



Western blot analysis of EGR2 in various lysates using Egr2 antibody.