

EGR4 RABBIT PAB

Cat.#: S219757

Product Name: Anti-EGR4 Rabbit Polyclonal Antibody

Synonyms: NGFIC, NGFI-C, PAT133

UNIPROT ID: Q05215 (Gene Accession - NP_001956)

Background: Early growth response protein 4 (EGR-4), also known as AT133, is a protein that in humans is encoded by the EGR4 gene. EGR-4 is a member of the early growth response (EGF) family of zinc finger transcription factors. Transcriptional regulator. Recognizes and binds to the DNA sequence 5'-GCGGGGCG-3' (GSG). Activates the transcription of target genes whose products are required for mitogenesis and differentiation.

Immunogen: Synthetic peptide of human EGR4

Applications: ELISA, WB, IHC

Recommended Dilutions: IHC: 25-100;WB: 500-2000;ELISA: 2000-5000

Host Species: Rabbit

Clonality: Rabbit Polyclonal

Isotype: Immunogen-specific rabbit IgG

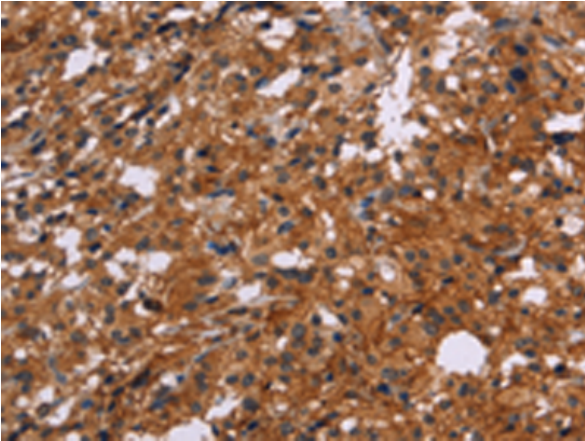
Purification: Antigen affinity purification

Species Reactivity: Human, Mouse

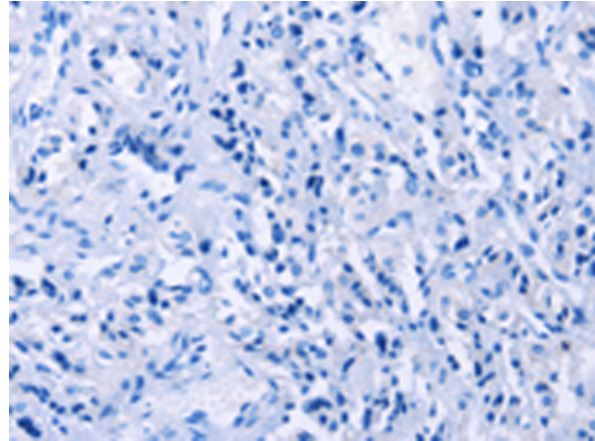
Constituents: PBS (without Mg²⁺ and Ca²⁺), pH 7.4, 150 mM NaCl, 0.05% Sodium Azide and 40% glycerol

Research Areas: Epigenetics and Nuclear Signaling

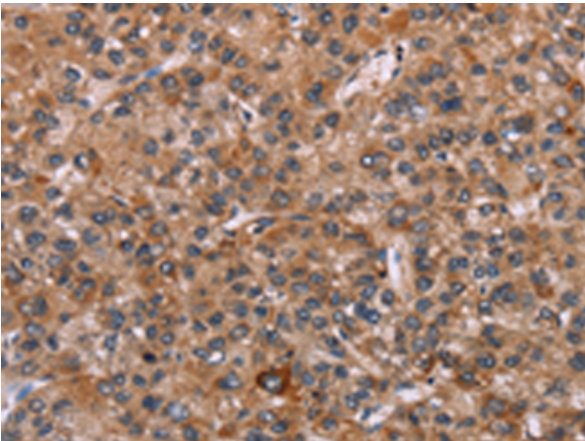
Storage & Shipping: Store at -20°C. Avoid repeated freezing and thawing



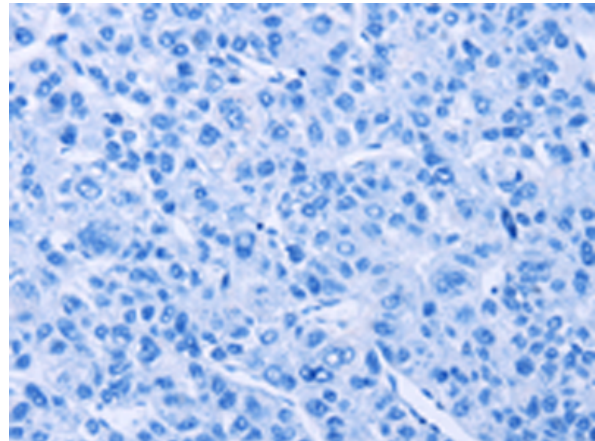
Immunohistochemistry analysis of paraffin embedded Human thyroid cancer tissue using 219757(EGR4 Antibody) at a dilution of 1/20(Cytoplasm).



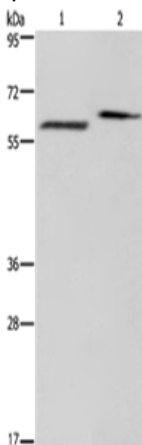
In comparison with the IHC on the left, the same paraffin-embedded Human thyroid cancer tissue is first treated with the synthetic peptide and then with 219757(Anti-EGR4 Antibody) at dilution 1/20.



The image on the left is immunohistochemistry of paraffin-embedded Human liver cancer tissue using 219757(Anti-EGR4 Antibody) at a dilution of 1/20.



In comparison with the IHC on the left, the same paraffin-embedded Human liver cancer tissue is first treated with synthetic peptide and then with D260293(Anti-EGR4 Antibody) at dilution 1/20.



Gel: 6%SDS-PAGE, Lysate: 40 µg;
Lane 1-2: Human fetal brain tissue, Mouse brain tissue;
Primary antibody: 219757(EGR4 Antibody) at dilution 1/400;
Secondary antibody: Goat anti rabbit IgG at 1/8000 dilution;
Exposure time: 2 minutes



Product Description

Pioneering GTPase and Oncogene Product Development since 2010
