

EHD1 RABBIT MAB

Cat.#: N262161

Product Name: Anti-EHD1 Rabbit Monoclonal Antibody

Synonyms: EHD1; H PAST; hPAST1; PAST; PAST homolog 1; PAST1; Tilin

UNIPROT ID: Q9H4M9

Background: Acts in early endocytic membrane fusion and membrane trafficking of recycling endosomes.

Immunogen: A synthetic peptide of human EHD1

Applications: WB,IHC-F,IHC-P,ICC/IF,IP

Recommended Dilutions: WB: 1/500-1/1000 IHC: 1/50-1/100 IF: 1/50-1/200 IP: 1/20

Host Species: Rabbit

Clonality: Rabbit Monoclonal

Clone ID: R01-4E6

MW: Calculated MW: 61 kDa; Observed MW: 61 kDa

Isotype: IgG

Purification: Affinity Purified

Species Reactivity: Human,Mouse,Rat

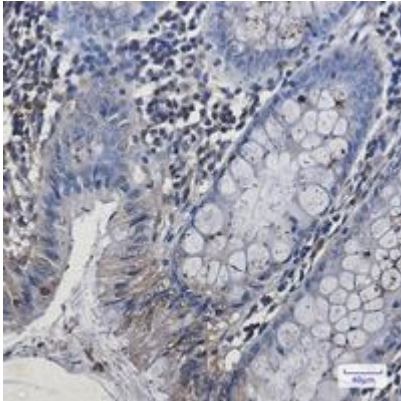
Conjugation: Unconjugated

Modification: Unmodified

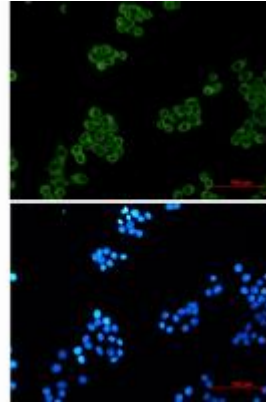
Constituents: PBS (without Mg²⁺ and Ca²⁺), pH 7.3 containing 50% glycerol, 0.5% BSA and 0.02% sodium azide

Research Areas: Cardiovascular

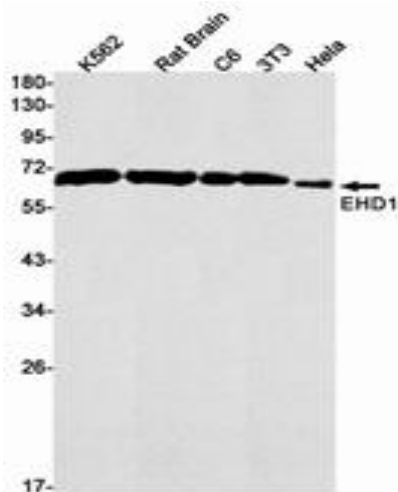
Storage & Shipping: Store at -20°C. Avoid repeated freezing and thawing



Immunohistochemistry analysis of paraffin-embedded Human colon cancer tissue using EHD1 antibody. High-pressure and temperature Sodium Citrate pH 6.0 was used for antigen retrieval.



Immunocytochemistry analysis of EHD1 (green) in Hela using EHD1 antibody, and DAPI (blue).



Western blot analysis of EHD1 in K562, rat Brain, C6, 3T3, Hela lysates using EHD1 antibody.