

## EHD3 RABBIT PAB

**Cat.#:** S221932

**Product Name:** Anti-EHD3 Rabbit Polyclonal Antibody

**Synonyms:** PAST3

**UNIPROT ID:** Q9NZN3 (Gene Accession - NP\_055415 )

**Background:** The Eps15 homology (EH) domain-containing protein family consists of four members, EHD1, EHD2, EHD3, and EHD4. The chromosomal locations of the human EHD genes are as follows: EHD1 maps to 11q13, EHD2 maps to 19q13.3, EHD3 maps to 2p21, and EHD4 maps to 15q11.1 (1-3). The encoded proteins of all EHD family members contain multiple conserved regions, which include an amino-terminal nucleotide-binding consensus site, a bipartite nuclear localization signal, and a carboxy-terminal EH protein-binding domain with an EF-hand motif (3,4). EHD1 is ubiquitously expressed with increased expression in testis (2,3). EHD2, EHD3, and EHD4 have more specific expression with EHD2 highly expressed in heart, EHD3 expressed in brain, kidney, liver, placenta, ovary, and heart, and EHD4 expressed in heart, placenta, and pancreas (1,5,6). The EHD proteins may participate in ligand-induced endocytosis (3-5).

**Immunogen:** Synthetic peptide of human EHD3

**Applications:** ELISA, WB, IHC

**Recommended Dilutions:** IHC: 20-100;WB: 200-1000;ELISA: 5000-10000

**Host Species:** Rabbit

**Clonality:** Rabbit Polyclonal

**Isotype:** Immunogen-specific rabbit IgG

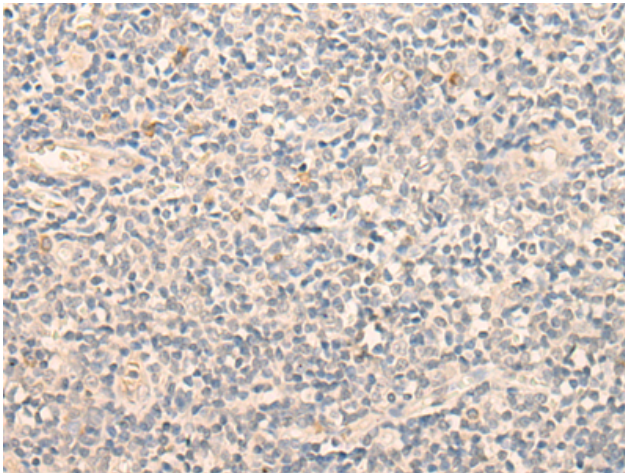
**Purification:** Antigen affinity purification

**Species Reactivity:** Human, Mouse, Rat

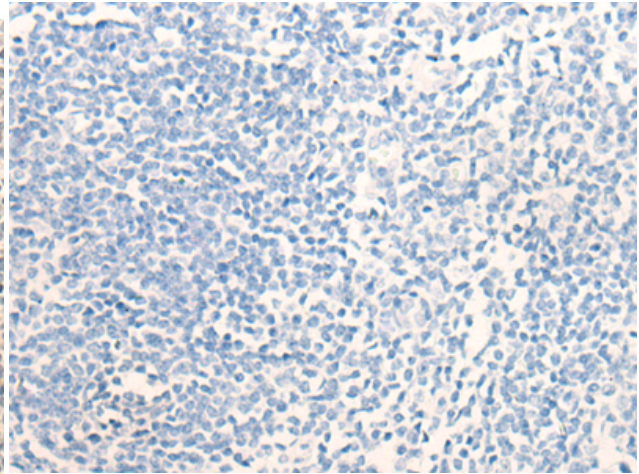
**Constituents:** PBS (without Mg<sup>2+</sup> and Ca<sup>2+</sup>), pH 7.4, 150 mM NaCl, 0.05% Sodium Azide and 40% glycerol

**Research Areas:** Signal Transduction

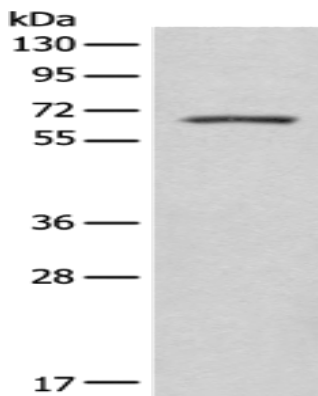
**Storage & Shipping:** Store at -20°C. Avoid repeated freezing and thawing



Immunohistochemistry analysis of paraffin embedded Human tonsil tissue using 221932(EHD3 Antibody) at a dilution of 1/20(Cytoplasm).



In comparison with the IHC on the left, the same paraffin-embedded Human tonsil tissue is first treated with the synthetic peptide and then with 221932(Anti-EHD3 Antibody) at dilution 1/20.



Gel: 8%SDS-PAGE, Lysate: 40  $\mu$ g;  
Lane: Mouse brain tissue lysate;  
Primary antibody: 221932(EHD3 Antibody) at dilution 1/350;  
Secondary antibody: Goat anti rabbit IgG at 1/8000 dilution;  
Exposure time: 5 minutes