

EHHADH RABBIT PAB

Cat.#: S217388

Product Name: Anti-EHHADH Rabbit Polyclonal Antibody

Synonyms: LBP; ECHD; LBFP; PBFE; L-PBE

UNIPROT ID: Q08426 (Gene Accession - BC038948)

Background: The protein encoded by this gene is a bifunctional enzyme and is one of the four enzymes of the peroxisomal beta-oxidation pathway. The N-terminal region of the encoded protein contains enoyl-CoA hydratase activity while the C-terminal region contains 3-hydroxyacyl-CoA dehydrogenase activity. Defects in this gene are a cause of peroxisomal disorders such as Zellweger syndrome. Two transcript variants encoding different isoforms have been found for this gene.

Immunogen: Fusion protein of human EHHADH

Applications: ELISA, WB, IHC

Recommended Dilutions: IHC: 50-200;WB: 200-1000;ELISA: 2000-5000

Host Species: Rabbit

Clonality: Rabbit Polyclonal

Isotype: Immunogen-specific rabbit IgG

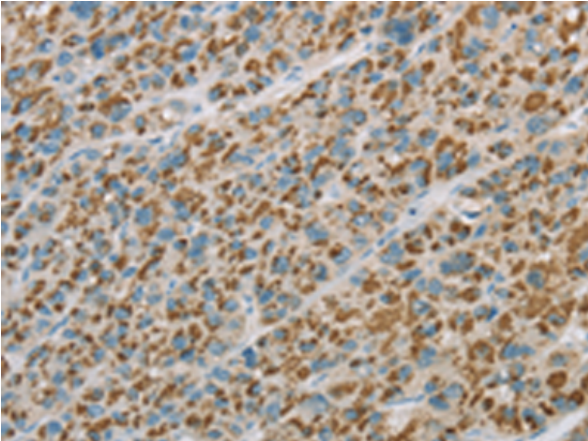
Purification: Antigen affinity purification

Species Reactivity: Human, Mouse

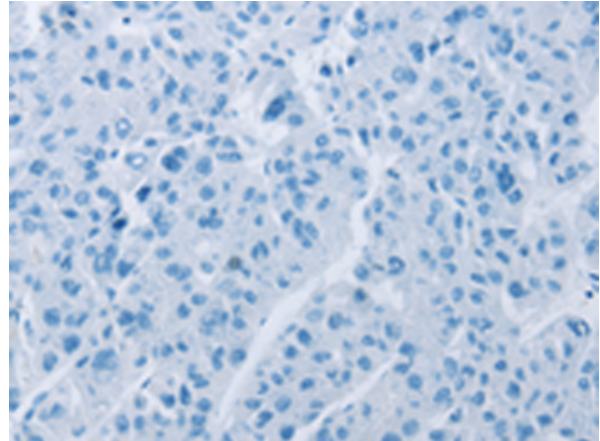
Constituents: PBS (without Mg²⁺ and Ca²⁺), pH 7.4, 150 mM NaCl, 0.05% Sodium Azide and 40% glycerol

Research Areas: Metabolism, Cancer, Cardiovascular

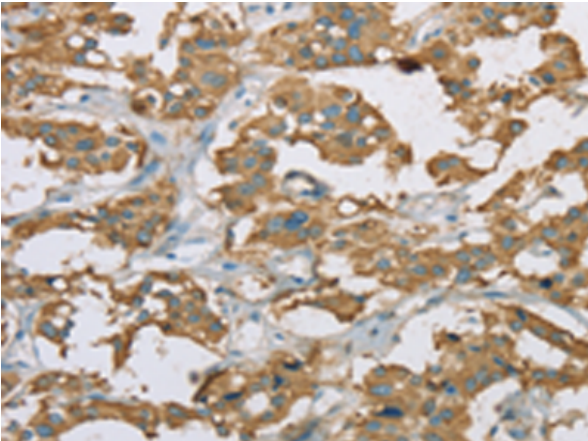
Storage & Shipping: Store at -20°C. Avoid repeated freezing and thawing



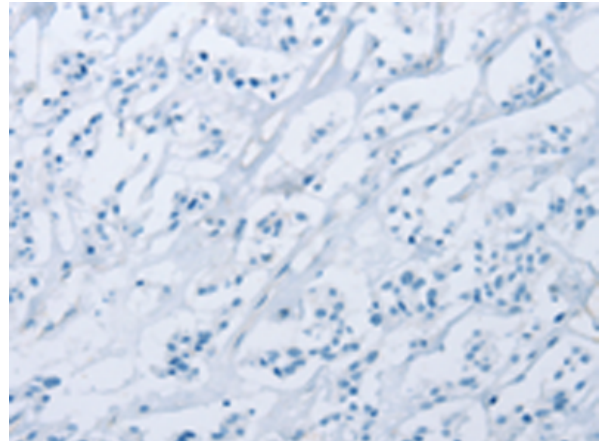
Immunohistochemistry analysis of paraffin embedded Human liver cancer tissue using 217388(EHHADH Antibody) at a dilution of 1/20(Cytoplasm).



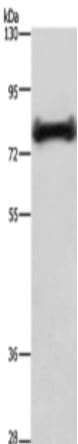
In comparison with the IHC on the left, the same paraffin-embedded Human liver cancer tissue is first treated with the fusion protein and then with 217388(Anti-EHHADH Antibody) at dilution 1/20.



The image on the left is immunohistochemistry of paraffin-embedded Human thyroid cancer tissue using 217388(Anti-EHHADH Antibody) at a dilution of 1/20.



In comparison with the IHC on the left, the same paraffin-embedded Human thyroid cancer tissue is first treated with fusion protein and then with D222276(Anti-EHHADH Antibody) at dilution 1/20.



Gel: 6%SDS-PAGE, Lysate: 40 µg;
Lane: Mouse liver tissue;
Primary antibody: 217388(EHHADH Antibody) at dilution 1/200;
Secondary antibody: Goat anti rabbit IgG at 1/8000 dilution;
Exposure time: 1 minute



Product Description

Pioneering GTPase and Oncogene Product Development since 2010
