

## EIF1A RABBIT MAB

**Cat.#:** N262162

**Product Name:** Anti-eIF1A Rabbit Monoclonal Antibody

**Synonyms:** EIF1A; EIF4C; eIF-1A; eIF-4C; EIF1AP1

**UNIPROT ID:** P47813

**Background:** Seems to be required for maximal rate of protein biosynthesis. Enhances ribosome dissociation into subunits and stabilizes the binding of the initiator Met-tRNA(I) to 40 S ribosomal subunits.

**Immunogen:** A synthetic peptide of human eIF1A

**Applications:** WB,ICC/IF,IP

**Recommended Dilutions:** WB: 1/500-1/1000 IF: 1/50-1/200 IP: 1/20

**Host Species:** Rabbit

**Clonality:** Rabbit Monoclonal

**Clone ID:** R03-7A9

**MW:** Calculated MW: 16 kDa; Observed MW: 16 kDa

**Isotype:** IgG

**Purification:** Affinity Purified

**Species Reactivity:** Human,Mouse,Rat

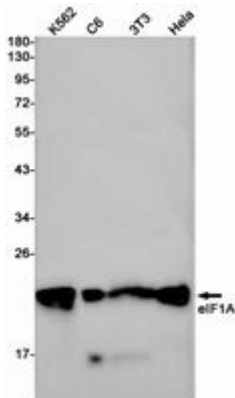
**Conjugation:** Unconjugated

**Modification:** Unmodified

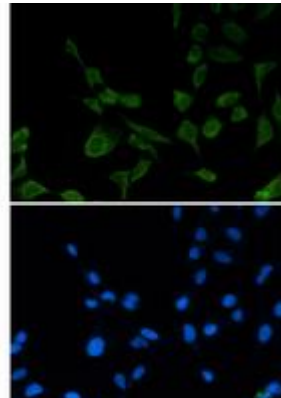
**Constituents:** PBS (without Mg<sup>2+</sup> and Ca<sup>2+</sup>), pH 7.3 containing 50% glycerol, 0.5% BSA and 0.02% sodium azide

**Research Areas:** Epigenetics and Nuclear Signaling

**Storage & Shipping:** Store at -20°C. Avoid repeated freezing and thawing



Western blot analysis of eIF1A in K562, C6, 3T3, HeLa lysates using eIF1A antibody.



Immunocytochemistry analysis of eIF1A (green) in 293T using eIF1A antibody, and DAPI (blue).