

EIF1AX RABBIT PAB

Cat.#: S219208

Product Name: Anti-EIF1AX Rabbit Polyclonal Antibody

Synonyms: EIF1A; EIF4C; eIF-1A; eIF-4C; EIF1AP1

UNIPROT ID: P47813 (Gene Accession - BC000793)

Background: This gene encodes an essential eukaryotic translation initiation factor. The protein is required for the binding of the 43S complex (a 40S subunit, eIF2/GTP/Met-tRNAⁱ and eIF3) to the 5' end of capped RNA.

Immunogen: Fusion protein of human EIF1AX

Applications: ELISA, IHC

Recommended Dilutions: IHC: 50-200; ELISA: 5000-10000

Host Species: Rabbit

Clonality: Rabbit Polyclonal

Isotype: Immunogen-specific rabbit IgG

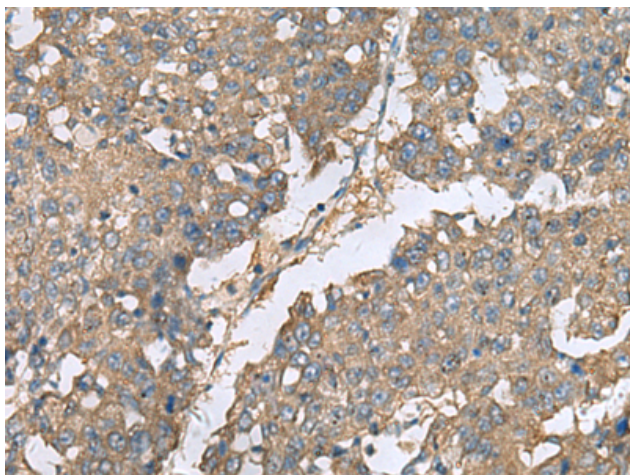
Purification: Antigen affinity purification

Species Reactivity: Human, Mouse

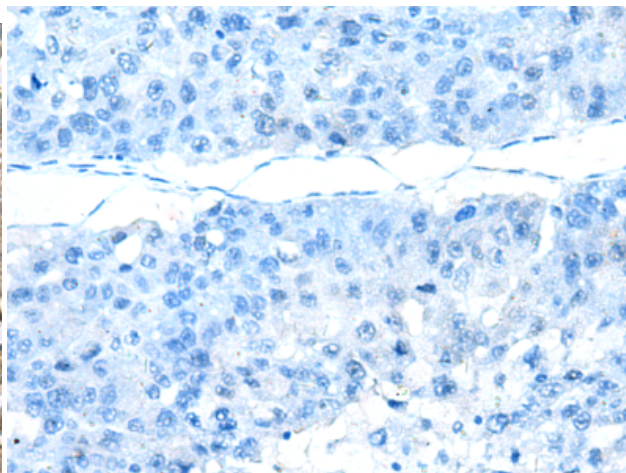
Constituents: PBS (without Mg²⁺ and Ca²⁺), pH 7.4, 150 mM NaCl, 0.05% Sodium Azide and 40% glycerol

Research Areas: Epigenetics and Nuclear Signaling

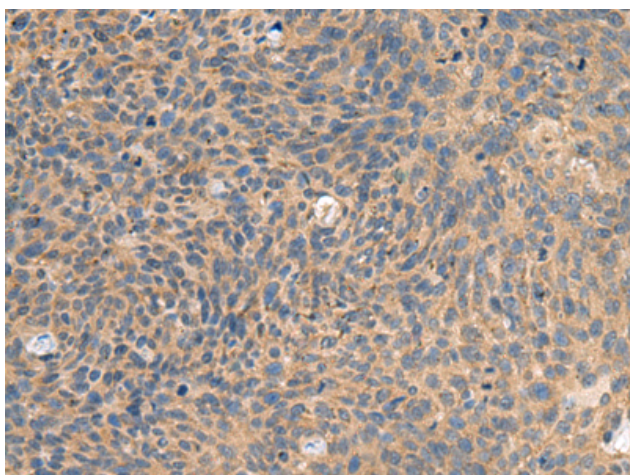
Storage & Shipping: Store at -20°C. Avoid repeated freezing and thawing



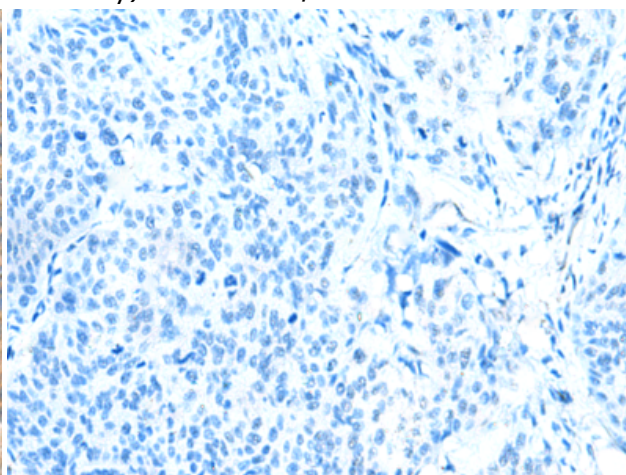
Immunohistochemistry analysis of paraffin embedded Human liver cancer tissue using 219208(EIF1AX Antibody) at a dilution of 1/65(Cytoplasm).



In comparison with the IHC on the left, the same paraffin-embedded Human liver cancer tissue is first treated with the fusion protein and then with 219208(Anti-EIF1AX Antibody) at dilution 1/65.



The image on the left is immunohistochemistry of paraffin-embedded Human cervical cancer tissue using 219208(Anti-EIF1AX Antibody) at a dilution of 1/65.



In comparison with the IHC on the left, the same paraffin-embedded Human cervical cancer tissue is first treated with fusion protein and then with D226054(Anti-EIF1AX Antibody) at dilution 1/65.