

## EIF2A RABBIT MAB

**Cat.#:** N262164

**Product Name:** Anti-eIF2A Rabbit Monoclonal Antibody

**Synonyms:** CDA02; EIF-2A; MST089; MSTP004; MSTP089

**UNIPROT ID:** Q9BY44

**Background:** Functions in the early steps of protein synthesis of a small number of specific mRNAs. Acts by directing the binding of methionyl-tRNA<sub>i</sub> to 40S ribosomal subunits. In contrast to the eIF-2 complex, it binds methionyl-tRNA<sub>i</sub> to 40 S subunits in a codon-dependent manner, whereas the eIF-2 complex binds methionyl-tRNA<sub>i</sub> to 40 S subunits in a GTP-dependent manner.

**Immunogen:** A synthetic peptide of human eIF2A

**Applications:** WB,ICC/IF

**Recommended Dilutions:** WB: 1/500-1/1000 IF: 1/50-1/200

**Host Species:** Rabbit

**Clonality:** Rabbit Monoclonal

**Clone ID:** R08-8E2

**MW:** Calculated MW: 65 kDa; Observed MW: 65 kDa

**Isotype:** IgG

**Purification:** Affinity Purified

**Species Reactivity:** Human,Mouse,Rat

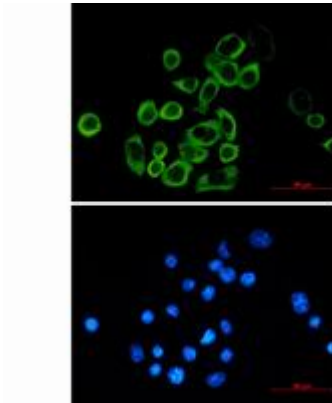
**Conjugation:** Unconjugated

**Modification:** Unmodified

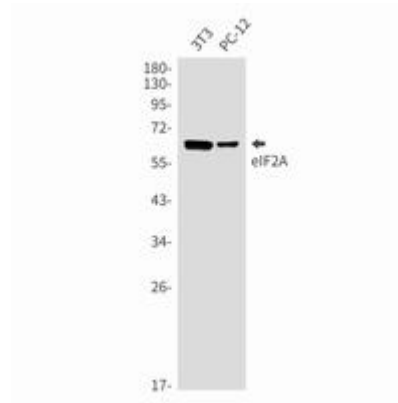
**Constituents:** PBS (without Mg<sup>2+</sup> and Ca<sup>2+</sup>), pH 7.3 containing 50% glycerol, 0.5% BSA and 0.02% sodium azide

**Research Areas:** Epigenetics and Nuclear Signaling

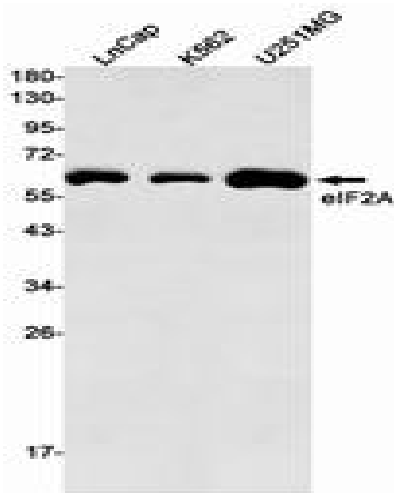
**Storage & Shipping:** Store at -20°C. Avoid repeated freezing and thawing



Immunocytochemistry analysis of eIF2A (green) in MCF-7 using eIF2A antibody, and DAPI (blue)



Western blot analysis of eIF2A in 3T3, PC-12 lysates using eIF2A antibody.



Western blot analysis of eIF2A in LnCap, K562, U251MG lysates using eIF2A antibody.