

## EIF2AK1 RABBIT PAB

**Cat.#:** S218900

**Product Name:** Anti-EIF2AK1 Rabbit Polyclonal Antibody

**Synonyms:** HCR; HRI

**UNIPROT ID:** Q9BQI3 (Gene Accession - BC006524 )

**Background:** The protein encoded by this gene acts at the level of translation initiation to downregulate protein synthesis in response to stress. The encoded protein is a kinase that can be inactivated by hemin. Two transcript variants encoding different isoforms have been found for this gene.

**Immunogen:** Fusion protein of human EIF2AK1

**Applications:** ELISA, WB, IHC

**Recommended Dilutions:** IHC: 50-300;WB: 500-2000;ELISA: 5000-10000

**Host Species:** Rabbit

**Clonality:** Rabbit Polyclonal

**Isotype:** Immunogen-specific rabbit IgG

**Purification:** Antigen affinity purification

**Species Reactivity:** Human, Mouse

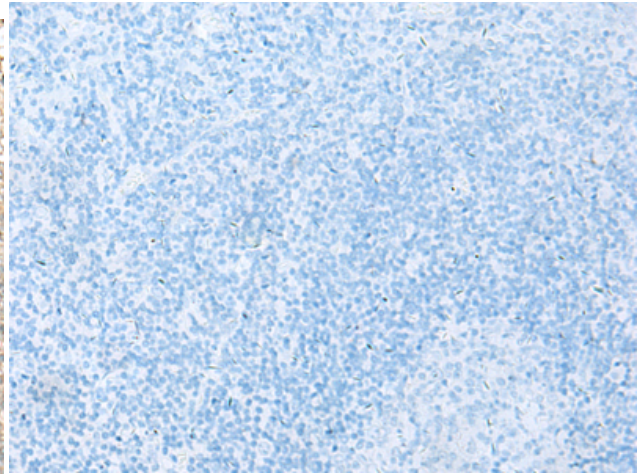
**Constituents:** PBS (without Mg<sup>2+</sup> and Ca<sup>2+</sup>), pH 7.4, 150 mM NaCl, 0.05% Sodium Azide and 40% glycerol

**Research Areas:** Signal Transduction, Epigenetics and Nuclear Signaling

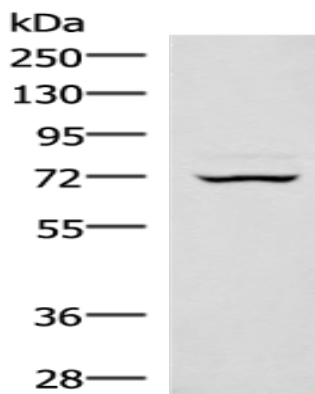
**Storage & Shipping:** Store at -20°C. Avoid repeated freezing and thawing



Immunohistochemistry analysis of paraffin embedded Human tonsil tissue using 218900(EIF2AK1 Antibody) at a dilution of 1/45(Cytoplasm).



In comparison with the IHC on the left, the same paraffin-embedded Human tonsil tissue is first treated with the fusion protein and then with 218900(Anti-EIF2AK1 Antibody) at dilution 1/45.



Gel: 8%SDS-PAGE, Lysate: 40  $\mu$ g;  
Lane: 293T cell lysate;  
Primary antibody: 218900(EIF2AK1 Antibody) at dilution 1/350;  
Secondary antibody: Goat anti rabbit IgG at 1/8000 dilution;  
Exposure time: 15 seconds