

EIF4A1 (6D7) MOUSE MAB

Cat.#: N261248

Product Name: Anti-eIF4A1 (6D7) Mouse Monoclonal Antibody

Synonyms: Eukaryotic initiation factor 4A-I; eIF-4A-I; eIF4A-I; ATP-dependent RNA helicase eIF4A-1

UNIPROT ID: P60842

Background: ATP-dependent RNA helicase which is a subunit of the eIF4F complex involved in cap recognition and is required for mRNA binding to ribosome.

Immunogen: Synthetic Peptide of eIF4A1

Applications: WB,IHC-F,IHC-P,ICC/IF

Recommended Dilutions: WB: 1/500-1/1000 IHC: 1/50-1/100 IF: 1/50-1/200

Host Species: Mouse

Clonality: Mouse Monoclonal

Clone ID: 6D7-10D5-7H7

MW: Calculated MW: 46 kDa; Observed MW: 46 kDa

Isotype: IgG1

Purification: Affinity Purified

Species Reactivity: Human,Mouse,Rat

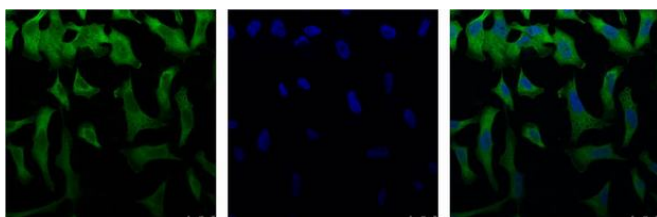
Conjugation: Unconjugated

Modification: Unmodified

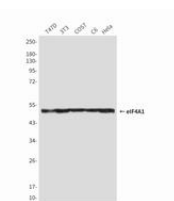
Constituents: PBS (without Mg²⁺ and Ca²⁺), pH 7.3 containing 50% glycerol, 0.5% BSA and 0.02% sodium azide

Research Areas: Epigenetics and Nuclear Signaling

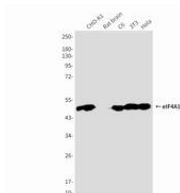
Storage & Shipping: Store at -20°C. Avoid repeated freezing and thawing



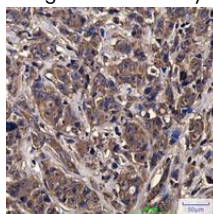
Immunofluorescence analysis of eIF4A1 (6D7) in HeLa using eIF4A1 (6D7) antibody (Left), and DAPI (blue)



Western blot analysis of eIF4A1 in T47D, 3T3, COS7, C6 and HeLa lysates using eIF4A1 antibody.



Western blot analysis of eIF4A1 (6D7) in CHO-K1, rat brain, C6, 3T3, HeLa lysates using eIF4A1 (6D7) antibody.



Immunohistochemistry analysis of paraffin-embedded Human breast cancer tissue using eIF4A1 (6D7) antibody. High-pressure and temperature Sodium Citrate pH 6.0 was used for antigen retrieval.