

EIF4A3 RABBIT MAB**Cat.#:** N262168**Product Name:** Anti-eIF4A3 Rabbit Monoclonal Antibody**Synonyms:** DDX48; EIF4A3; eIF4AIII; hNMP 265; NMP 265; NMP265; NUK34**UNIPROT ID:** P38919

Background: ATP-dependent RNA helicase. Component of a splicing-dependent multiprotein exon junction complex (EJC) deposited at splice junction on mRNAs. The EJC is a dynamic structure consisting of a few core proteins and several more peripheral nuclear and cytoplasmic associated factors that join the complex only transiently either during EJC assembly or during subsequent mRNA metabolism.

Immunogen: A synthetic peptide of human Eif4a3

Applications: WB,IHC-F,IHC-P,ICC/IF,IP

Recommended Dilutions: WB: 1/500-1/1000 IHC: 1/50-1/100 IF: 1/50-1/200 IP: 1/20

Host Species: Rabbit

Clonality: Rabbit Monoclonal

Clone ID: R05-1B7

MW: Calculated MW: 47 kDa; Observed MW: 47 kDa

Isotype: IgG

Purification: Affinity Purified

Species Reactivity: Human,Rat,Hamster

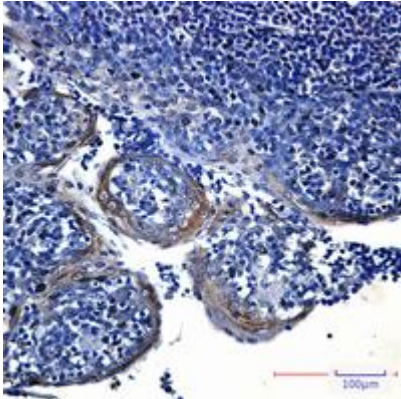
Conjugation: Unconjugated

Modification: Unmodified

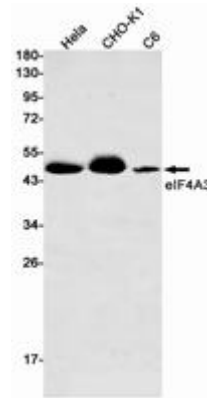
Constituents: PBS (without Mg²⁺ and Ca²⁺), pH 7.3 containing 50% glycerol, 0.5% BSA and 0.02% sodium azide

Research Areas: Epigenetics and Nuclear Signaling

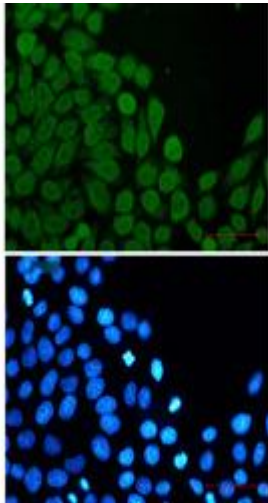
Storage & Shipping: Store at -20°C. Avoid repeated freezing and thawing



Immunohistochemistry analysis of paraffin-embedded Human tonsil using Eif4a3 antibody. High-pressure and temperature Sodium Citrate pH 6.0 was used for antigen retrieval.



Western blot analysis of eIF4A3 in HeLa, CHO-K1, C6 lysates using eIF4A3 antibody.



Immunocytochemistry analysis of Eif4a3 (green) in HeLa using Eif4a3 antibody, and DAPI (blue)