

EIF4B RABBIT PAB

Cat.#: S217392

Product Name: Anti-EIF4B Rabbit Polyclonal Antibody

Synonyms: EIF-4B; PRO1843

UNIPROT ID: P23588 (Gene Accession - BC073139)

Background: Required for the binding of mRNA to ribosomes. Functions in close association with EIF4-F and EIF4-A. Binds near the 5'-terminal cap of mRNA in presence of EIF-4F and ATP. Promotes the ATPase activity and the ATP-dependent RNA unwinding activity of both EIF4-A and EIF4-F.

Immunogen: Fusion protein of human EIF4B

Applications: ELISA, IHC

Recommended Dilutions: IHC: 100-300; ELISA: 5000-10000

Host Species: Rabbit

Clonality: Rabbit Polyclonal

Isotype: Immunogen-specific rabbit IgG

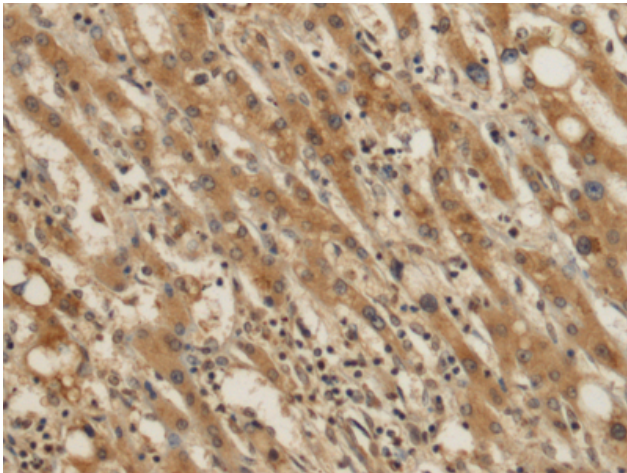
Purification: Antigen affinity purification

Species Reactivity: Human, Mouse

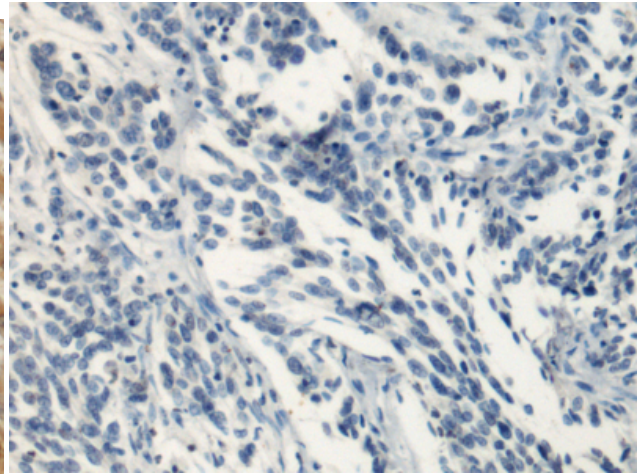
Constituents: PBS (without Mg²⁺ and Ca²⁺), pH 7.4, 150 mM NaCl, 0.05% Sodium Azide and 40% glycerol

Research Areas: Epigenetics and Nuclear Signaling

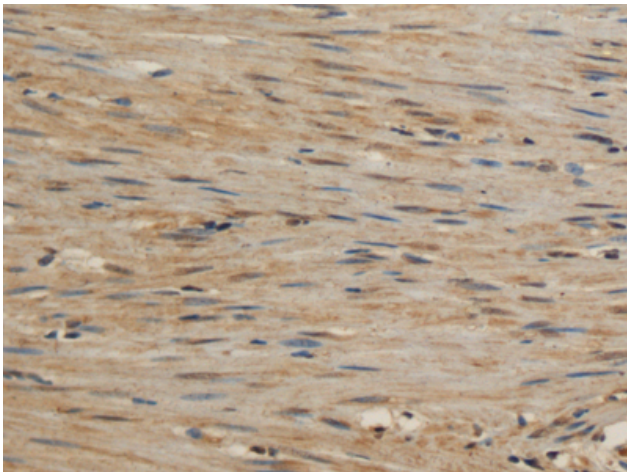
Storage & Shipping: Store at -20°C. Avoid repeated freezing and thawing



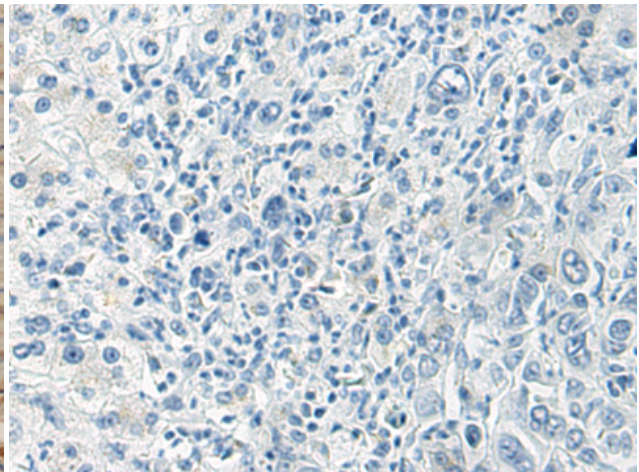
Immunohistochemistry analysis of paraffin embedded Human liver cancer tissue using 217392(EIF4B Antibody) at a dilution of 1/120(Cytoplasm).



In comparison with the IHC on the left, the same paraffin-embedded Human liver cancer tissue is first treated with the fusion protein and then with 217392(Anti-EIF4B Antibody) at dilution 1/120.



The image on the left is immunohistochemistry of paraffin-embedded Human colorectal cancer tissue using 217392(Anti-EIF4B Antibody) at a dilution of 1/120.



In comparison with the IHC on the left, the same paraffin-embedded Human colorectal cancer tissue is first treated with fusion protein and then with D222282(Anti-EIF4B Antibody) at dilution 1/120.