

EIF4G1 RABBIT PAB

Cat.#: N225280

Product Name: Anti-eIF4G1 Rabbit pAb

Synonyms: p220

UNIPROT ID: Q04637

Background: Component of the protein complex eIF4F, which is involved in the recognition of the mRNA cap, ATP-dependent unwinding of 5'-terminal secondary structure and recruitment of mRNA to the ribosome.

Immunogen: Peptide sequence around aa.1230~1234 (P-V-S-P-L) derived from Human eIF4G.

Applications: WB,IHC-P,ICC/IF

Recommended Dilutions: WB: 1/500-1/1000 IHC: 1/50-1/100 IF: 1/50-1/200

Host Species: Rabbit

Clonality: Rabbit Polyclonal

Clone ID: -

MW: Calculated MW: 175 kDa; Observed MW: 220 kDa

Isotype: IgG

Purification: Affinity Chromatography

Species Reactivity: Human

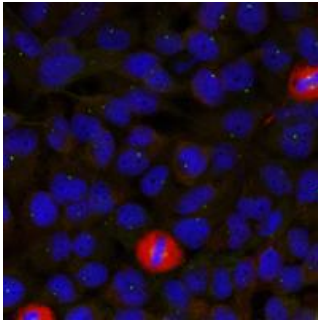
Conjugation: Unconjugated

Modification: Unmodified

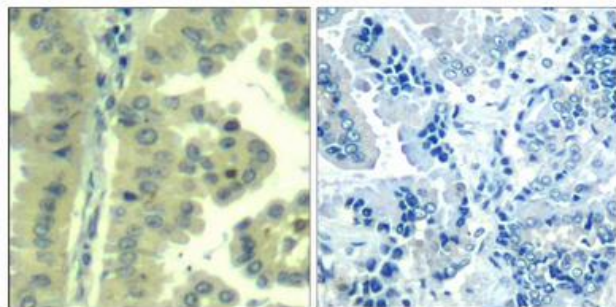
Constituents: PBS (without Mg²⁺ and Ca²⁺), pH 7.3 containing 50% glycerol, 0.5% BSA and 0.02% sodium azide

Research Areas: Epigenetics and Nuclear Signaling

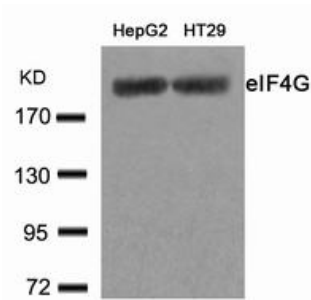
Storage & Shipping: Store at -20°C. Avoid repeated freezing and thawing



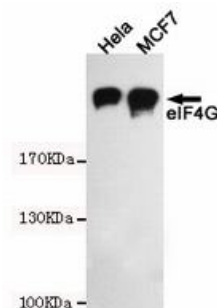
Immunofluorescence analysis of eIF4G1 in HeLa using eIF4G (Ab1232) antibody.



Immunohistochemistry analysis of paraffin-embedded Human lung carcinoma tissue using eIF4G (Ab1232) antibody (left) or the same antibody preincubated with blocking peptide (right). High-pressure and temperature Sodium Citrate pH 6.0 was used for antigen retrieval.



Western blot analysis of eIF4G1 in HepG2 and HT-29 lysates using eIF4G (Ab1232) antibody.



Western blot analysis of eIF4G1 in HeLa and MCF-7 lysates using eIF4G1 antibody