

ELAC1 RABBIT PAB

Cat.#: S219083

Product Name: Anti-ELAC1 Rabbit Polyclonal Antibody

Synonyms: D29

UNIPROT ID: Q9H777 (Gene Accession - BC014624)

Background: Zinc phosphodiesterase, which displays some tRNA 3'-processing endonuclease activity. Probably involved in tRNA maturation, by removing a 3'-trailer from precursor tRNA.

Immunogen: Fusion protein of human ELAC1

Applications: ELISA, IHC

Recommended Dilutions: IHC: 50-300; ELISA: 5000-10000

Host Species: Rabbit

Clonality: Rabbit Polyclonal

Isotype: Immunogen-specific rabbit IgG

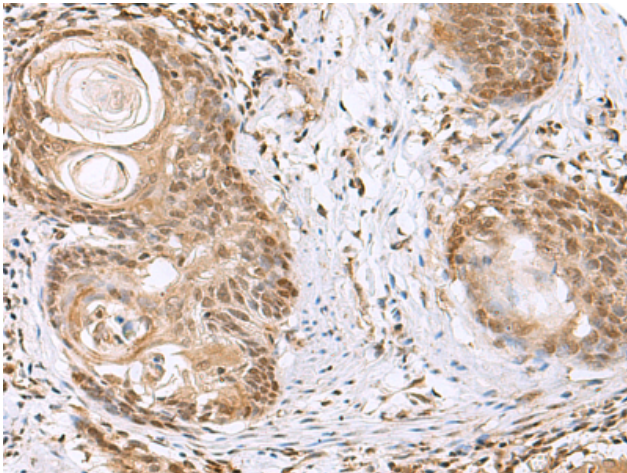
Purification: Antigen affinity purification

Species Reactivity: Human, Mouse

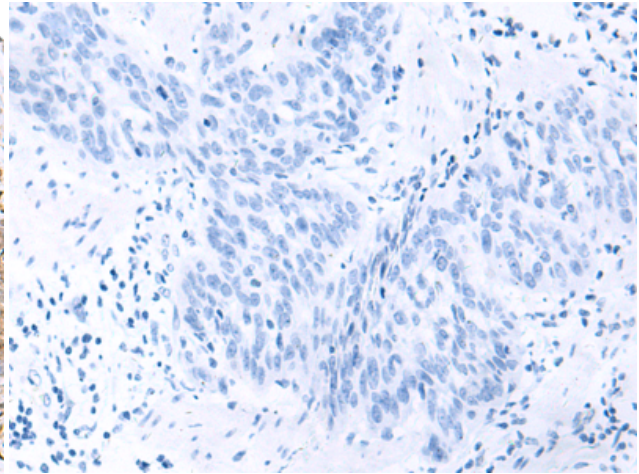
Constituents: PBS (without Mg²⁺ and Ca²⁺), pH 7.4, 150 mM NaCl, 0.05% Sodium Azide and 40% glycerol

Research Areas: Epigenetics and Nuclear Signaling

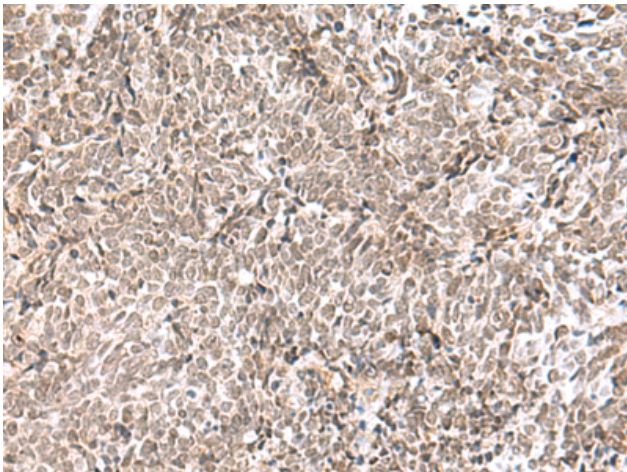
Storage & Shipping: Store at -20°C. Avoid repeated freezing and thawing



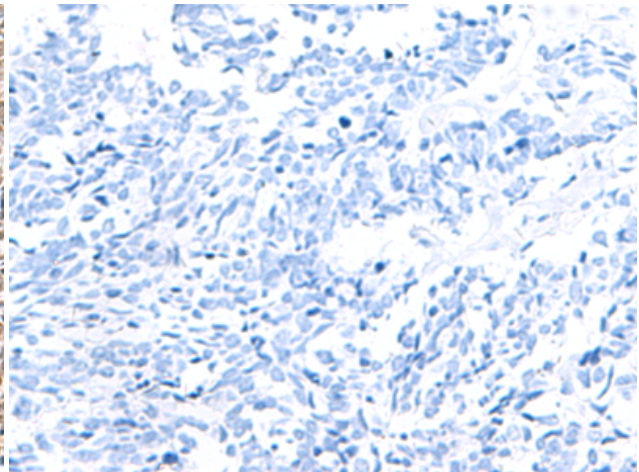
Immunohistochemistry analysis of paraffin embedded Human esophagus cancer tissue using 219083(ELAC1 Antibody) at a dilution of 1/65(Nucleus).



In comparison with the IHC on the left, the same paraffin-embedded Human esophagus cancer tissue is first treated with the fusion protein and then with 219083(Anti-ELAC1 Antibody) at dilution 1/65.



The image on the left is immunohistochemistry of paraffin-embedded Human lung cancer tissue using 219083(Anti-ELAC1 Antibody) at a dilution of 1/65.



In comparison with the IHC on the left, the same paraffin-embedded Human lung cancer tissue is first treated with fusion protein and then with D225800(Anti-ELAC1 Antibody) at dilution 1/65.