

ELAVL1 RABBIT PAB

Cat.#: S216489

Product Name: Anti-ELAVL1 Rabbit Polyclonal Antibody

Synonyms: HUR; Hua; MeIG; ELAV1

UNIPROT ID: Q15717 (Gene Accession - BC003376)

Background: The protein encoded by this gene is a member of the ELAVL family of RNA-binding proteins that contain several RNA recognition motifs, and selectively bind AU-rich elements (AREs) found in the 3' untranslated regions of mRNAs. AREs signal degradation of mRNAs as a means to regulate gene expression, thus by binding AREs, the ELAVL family of proteins play a role in stabilizing ARE-containing mRNAs. This gene has been implicated in a variety of biological processes and has been linked to a number of diseases, including cancer. It is highly expressed in many cancers, and could be potentially useful in cancer diagnosis, prognosis, and therapy.

Immunogen: Fusion protein of human ELAVL1

Applications: ELISA, WB, IHC

Recommended Dilutions: IHC: 25-100;WB: 500-2000;ELISA: 2000-5000

Host Species: Rabbit

Clonality: Rabbit Polyclonal

Isotype: Immunogen-specific rabbit IgG

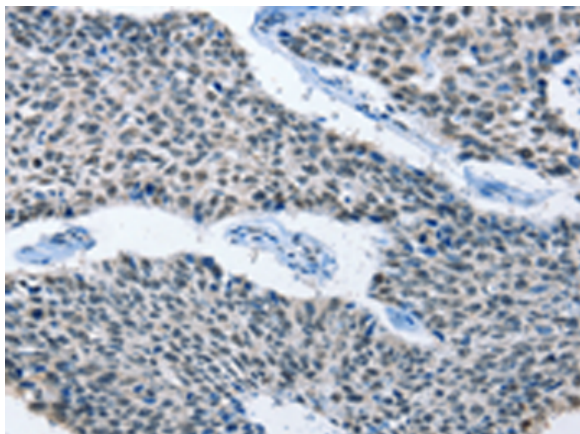
Purification: Antigen affinity purification

Species Reactivity: Human, Mouse

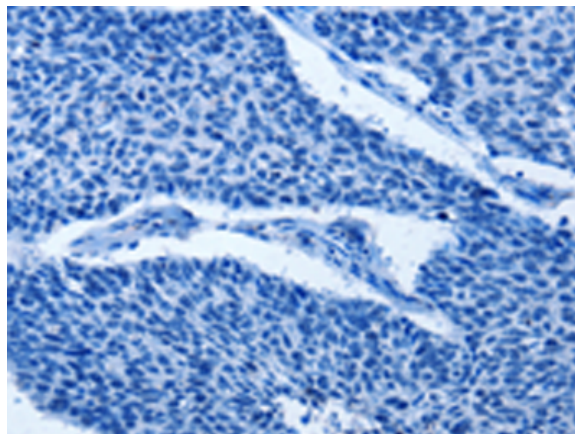
Constituents: PBS (without Mg²⁺ and Ca²⁺), pH 7.4, 150 mM NaCl, 0.05% Sodium Azide and 40% glycerol

Research Areas: Epigenetics and Nuclear Signaling

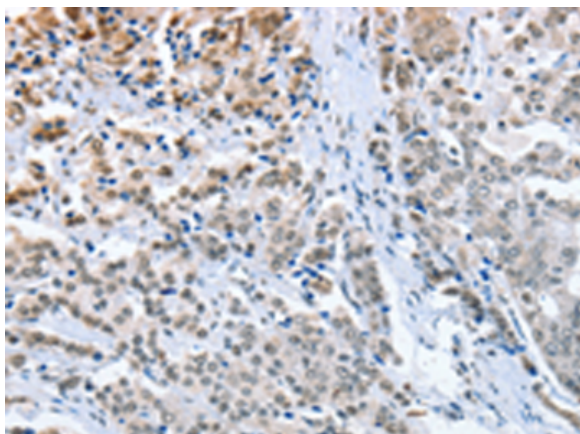
Storage & Shipping: Store at -20°C. Avoid repeated freezing and thawing



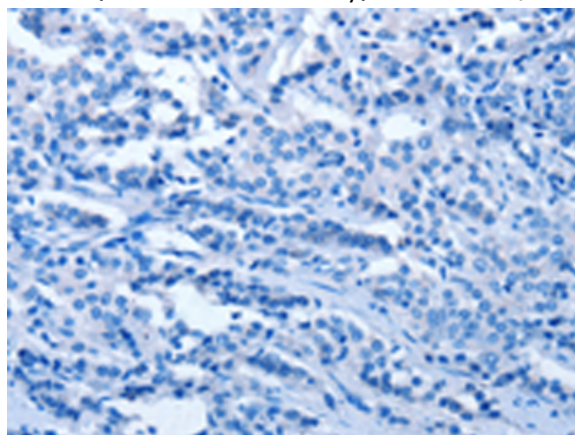
Immunohistochemistry analysis of paraffin embedded Human lung cancer tissue using 216489(ELAVL1 Antibody) at a dilution of 1/50(Nucleus and Cytoplasm).



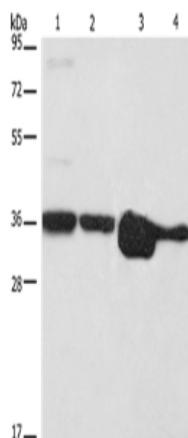
In comparison with the IHC on the left, the same paraffin-embedded Human lung cancer tissue is first treated with the fusion protein and then with 216489(Anti-ELAVL1 Antibody) at dilution 1/50.



The image on the left is immunohistochemistry of paraffin-embedded Human prostate cancer tissue using 216489(Anti-ELAVL1 Antibody) at a dilution of 1/50.



In comparison with the IHC on the left, the same paraffin-embedded Human prostate cancer tissue is first treated with fusion protein and then with D220589(Anti-ELAVL1 Antibody) at dilution 1/50.



Gel: 10%SDS-PAGE, Lysate: 40 µg;
 Lane 1-4: HeLa cells, NIH/3T3 cells, A172 cells, A431 cells;
 Primary antibody: 216489(ELAVL1 Antibody) at dilution 1/800;
 Secondary antibody: Goat anti rabbit IgG at 1/8000 dilution;
 Exposure time: 5 seconds



Product Description

Pioneering GTPase and Oncogene Product Development since 2010
