

ELK1 RABBIT MAB

Cat.#: N262173

Product Name: Anti-ELK1 Rabbit Monoclonal Antibody

Synonyms: ETS domain-containing protein Elk-1

UNIPROT ID: P19419

Background: This gene is a member of the Ets family of transcription factors and of the ternary complex factor (TCF) subfamily. Proteins of the TCF subfamily form a ternary complex by binding to the the serum response factor and the serum reponse element in the promoter of the c-fos proto-oncogene. The protein encoded by this gene is a nuclear target for the ras-raf-MAPK signaling cascade.

Immunogen: A synthetic peptide of human ELK1

Applications: WB,IHC-P,IP,ChIP

Recommended Dilutions: WB: 1/500-1/1000 IHC: 1/50-1/100 IP: 1/20 ChIP: 1/20

Host Species: Rabbit

Clonality: Rabbit Monoclonal

Clone ID: R06-5J2

MW: Calculated MW: 45 kDa; Observed MW: 62 kDa

Isotype: IgG

Purification: Affinity Purified

Species Reactivity: Human

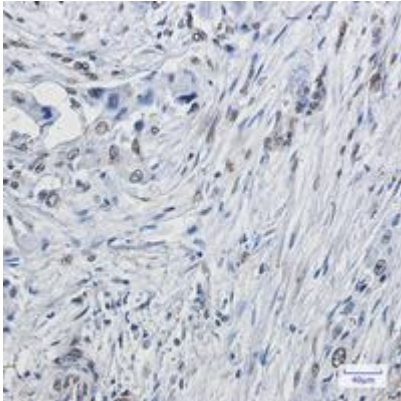
Conjugation: Unconjugated

Modification: Unmodified

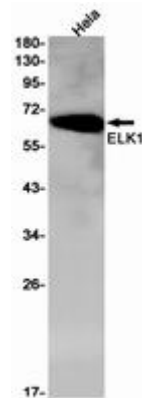
Constituents: PBS (without Mg²⁺ and Ca²⁺), pH 7.3 containing 50% glycerol, 0.5% BSA and 0.02% sodium azide

Research Areas: Signal Transduction

Storage & Shipping: Store at -20°C. Avoid repeated freezing and thawing



Immunohistochemistry analysis of paraffin-embedded Human lung cancer using ELK1 antibody. High-pressure and temperature Sodium Citrate pH 6.0 was used for antigen retrieval.



Western blot analysis of ELK1 in Sodium Hela lysates using ELK1 antibody.