

## ELL2 RABBIT PAB

**Cat.#:** S221943

**Product Name:** Anti-ELL2 Rabbit Polyclonal Antibody

**Synonyms:**

**UNIPROT ID:** O00472 (Gene Accession - NP\_036213 )

**Background:** ELL2 (RNA polymerase II elongation factor ELL2) is a 640 amino acid nuclear protein that belongs to the ELL/occludin family. This family is defined by a highly conserved domain of approximately 100 amino residues found within all eukaryotic occludin proteins and the RNA polymerase II elongation factor ELL. These elongation factors activate elongation by suppressing transient pausing by polymerase at many sites along the DNA and govern its interaction with RNA polymerase II and the ternary elongation complex. ELL2 may also contain a novel type of RNA polymerase II interaction domain that is capable of negatively regulating polymerase activity in promoter-specific transcription initiation in vitro.

**Immunogen:** Synthetic peptide of human ELL2

**Applications:** ELISA, IHC

**Recommended Dilutions:** IHC: 20-100; ELISA: 5000-10000

**Host Species:** Rabbit

**Clonality:** Rabbit Polyclonal

**Isotype:** Immunogen-specific rabbit IgG

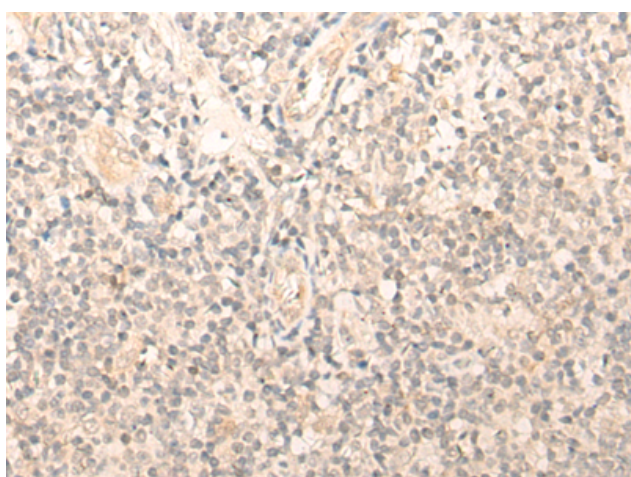
**Purification:** Antigen affinity purification

**Species Reactivity:** Human, Mouse

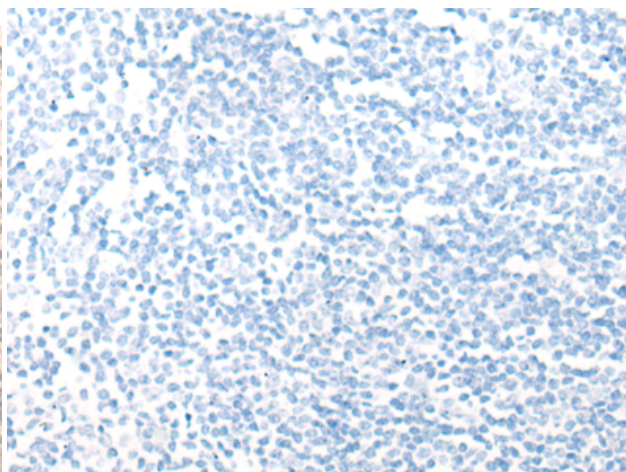
**Constituents:** PBS (without Mg<sup>2+</sup> and Ca<sup>2+</sup>), pH 7.4, 150 mM NaCl, 0.05% Sodium Azide and 40% glycerol

**Research Areas:** Epigenetics and Nuclear Signaling

**Storage & Shipping:** Store at -20°C. Avoid repeated freezing and thawing



Immunohistochemistry analysis of paraffin embedded Human tonsil tissue using 221943(ELL2 Antibody) at a dilution of 1/30(Nucleus).



In comparison with the IHC on the left, the same paraffin-embedded Human tonsil tissue is first treated with the synthetic peptide and then with 221943(Anti-ELL2 Antibody) at dilution 1/30.



# Product Description

Pioneering GTPase and Oncogene Product Development since 2010

---