

ELONGATION FACTOR 1A2 BINDING PROTEIN RABBIT PAB

Cat.#: N225534

Product Name: Anti-Elongation Factor 1A2 Binding Protein Rabbit pAb

Synonyms: IGFN1 antibody; immunoglobulin-like and fibronectin type III domain containing 1 antibody; EEF1A2BP1 antibody

UNIPROT ID: Q86VF2

Background: Predicted to be involved in homophilic cell adhesion via plasma membrane adhesion molecules; retina layer formation; and synapse assembly. Predicted to be located in Z disc and nucleus. Predicted to be active in synapse.

Immunogen: Recombinant Protein of IGFN1

Applications: WB,IHC-P

Recommended Dilutions: WB: 1/500-1/1000 IHC: 1/50-1/100

Host Species: Rabbit

Clonality: Rabbit Polyclonal

Clone ID: -

MW: Calculated MW: 138 kDa; Observed MW: 115 kDa

Isotype: IgG

Purification: Affinity Purified

Species Reactivity: Human,Mouse,Rat

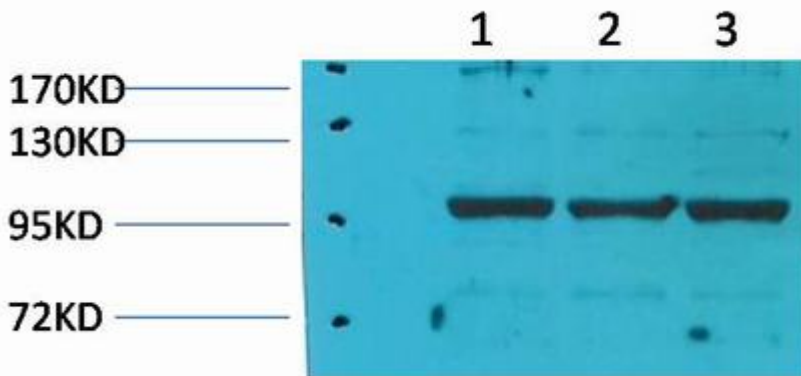
Conjugation: Unconjugated

Modification: Unmodified

Constituents: PBS (without Mg²⁺ and Ca²⁺), pH 7.3 containing 50% glycerol, 0.5% BSA and 0.02% sodium azide

Research Areas: Epigenetics and Nuclear Signaling

Storage & Shipping: Store at -20°C. Avoid repeated freezing and thawing



Western blot analysis of Elongation Factor 1A2 Binding Protein in Pig Skeletal Muscle, rat Skeletal Muscle, rat Skeletal Muscle lysates using eEF1A2 antibody.