

ELONGATION FACTOR 2 RABBIT MAB

Cat.#: N263310

Product Name: Anti-Elongation factor 2 Rabbit Monoclonal Antibody

Synonyms: EEF2; EF2; Elongation factor 2; EF-2

UNIPROT ID: P13639

Background: Catalyzes the GTP-dependent ribosomal translocation step during translation elongation. During this step, the ribosome changes from the pre-translocational (PRE) to the post-translocational (POST) state as the newly formed A-site-bound peptidyl-tRNA and P-site-bound deacylated tRNA move to the P and E sites, respectively.

Immunogen: A synthetic peptide of human EEF2/Elongation factor 2

Applications: WB,IHC-F,IHC-P,ICC/IF,IP

Recommended Dilutions: WB: 1/500-1/1000 IHC: 1/50-1/100 IF: 1/50-1/200 IP: 1/20

Host Species: Rabbit

Clonality: Rabbit Monoclonal

Clone ID: R07-2C0

MW: Calculated MW: 95 kDa; Observed MW: 95 kDa

Isotype: IgG

Purification: Affinity Purified

Species Reactivity: Human,Mouse,Rat

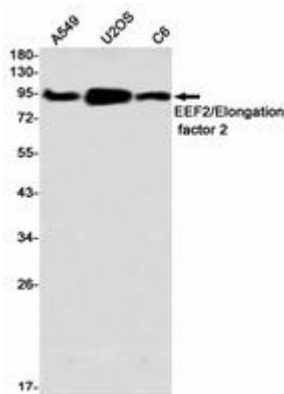
Conjugation: Unconjugated

Modification: Unmodified

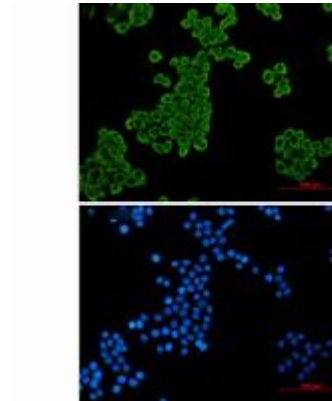
Constituents: PBS (without Mg²⁺ and Ca²⁺), pH 7.3 containing 50% glycerol, 0.5% BSA and 0.02% sodium azide

Research Areas: Epigenetics and Nuclear Signaling

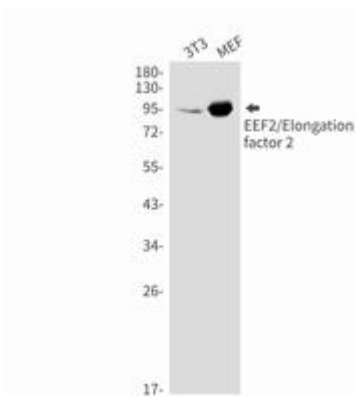
Storage & Shipping: Store at -20°C. Avoid repeated freezing and thawing



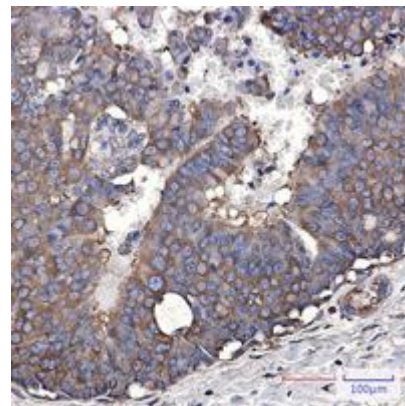
Western blot analysis of EEF2/Elongation factor 2 in A549, U2OS, C6 lysates using EEF2/Elongation factor 2 antibody



Immunocytochemistry analysis of EEF2/Elongation factor 2 (green) in HeLa using EEF2/Elongation factor 2 antibody, and DAPI (blue).



Western blot analysis of EEF2/Elongation factor 2 in 3T3, MEF lysates using EEF2/Elongation factor 2 antibody.



Immunohistochemistry analysis of paraffin-embedded Human breast cancer using EEF2/Elongation factor 2 antibody. High-pressure and temperature Sodium Citrate pH 6.0 was used for antigen retrieval.