

## ELOVL1 RABBIT PAB

**Cat.#:** S217400

**Product Name:** Anti-ELOVL1 Rabbit Polyclonal Antibody

**Synonyms:** Ssc1; IKSHD; CGI-88

**UNIPROT ID:** Q9BW60 (Gene Accession - BC000618 )

**Background:** Enables fatty acid elongase activity. Involved in fatty acid biosynthetic process and sphingolipid biosynthetic process. Located in endoplasmic reticulum.

**Immunogen:** Fusion protein of human ELOVL1

**Applications:** ELISA, WB, IHC

**Recommended Dilutions:** IHC: 50-200;WB: 1000-5000;ELISA: 5000-10000

**Host Species:** Rabbit

**Clonality:** Rabbit Polyclonal

**Isotype:** Immunogen-specific rabbit IgG

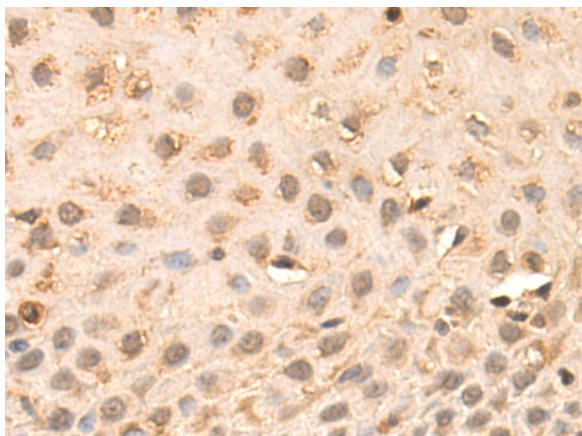
**Purification:** Antigen affinity purification

**Species Reactivity:** Human, Mouse

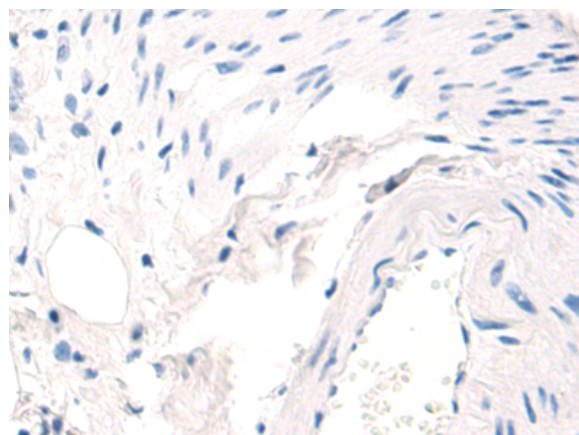
**Constituents:** PBS (without Mg<sup>2+</sup> and Ca<sup>2+</sup>), pH 7.4, 150 mM NaCl, 0.05% Sodium Azide and 40% glycerol

**Research Areas:** Metabolism, Cardiovascular

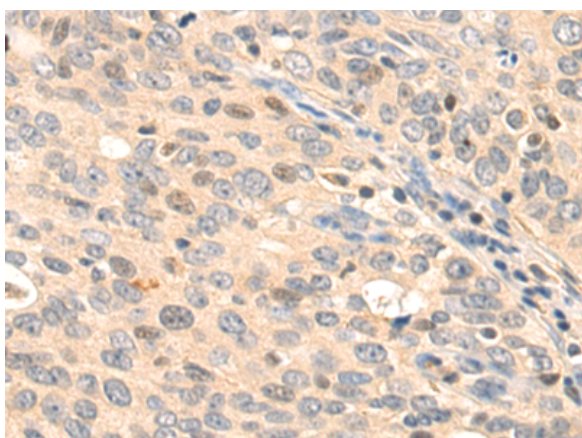
**Storage & Shipping:** Store at -20°C. Avoid repeated freezing and thawing



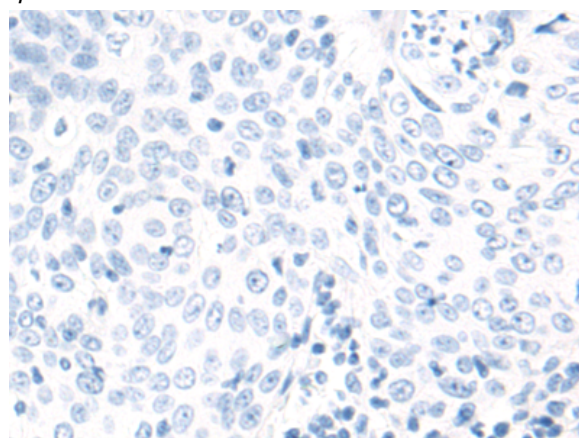
Immunohistochemistry analysis of paraffin embedded Human esophagus cancer tissue using 217400 (ELOVL1 Antibody) at a dilution of 1/70 (Cytoplasm and Nucleus).



In comparison with the IHC on the left, the same paraffin-embedded Human esophagus cancer tissue is first treated with the fusion protein and then with 217400 (Anti-ELOVL1 Antibody) at dilution 1/70.



The image on the left is immunohistochemistry of paraffin-embedded Human cervical cancer tissue using 217400 (Anti-ELOVL1 Antibody) at a dilution of 1/70.



In comparison with the IHC on the left, the same paraffin-embedded Human cervical cancer tissue is first treated with fusion protein and then with D222292 (Anti-ELOVL1 Antibody) at dilution 1/70.

kDa

130—  
100—  
70—  
55—  
35—  
25—  
15—



Gel: 8%SDS-PAGE, Lysate:40 µg;  
Lane: Mouse brain tissue lysates;  
Primary antibody: 217400 (ELOVL1 Antibody) at dilution 1/1000;  
Secondary antibody: HRP-conjugated Goat anti rabbit IgG at 1/5000 dilution;  
Exposure time: 40 seconds



# Product Description

Pioneering GTPase and Oncogene Product Development since 2010

---