

## ELOVL5 RABBIT MAB

**Cat.#:** N261544

**Product Name:** Anti-ELOVL5 Rabbit Monoclonal Antibody

**Synonyms:** ELOVL FA elongase 5; Fatty acid elongase 1; hELO1; Very long chain 3-ketoacyl-CoA synthase 5

**UNIPROT ID:** Q9NYP7

**Background:** Catalyzes the first and rate-limiting reaction of the four reactions that constitute the long-chain fatty acids elongation cycle.

**Immunogen:** A synthetic peptide of human ELOVL5

**Applications:** WB, ICC/IF

**Recommended Dilutions:** WB: 1/500-1/1000 IF: 1/50-1/200

**Host Species:** Rabbit

**Clonality:** Rabbit Monoclonal

**Clone ID:** R07-7B3

**MW:** Calculated MW: 35 kDa; Observed MW: 35 kDa

**Isotype:** IgG

**Purification:** Affinity Purified

**Species Reactivity:** Human

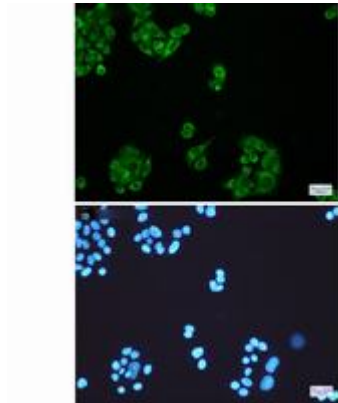
**Conjugation:** Unconjugated

**Modification:** Unmodified

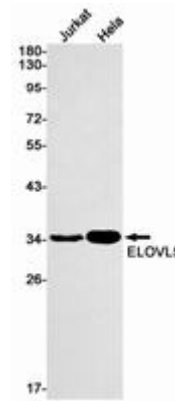
**Constituents:** PBS (without Mg<sup>2+</sup> and Ca<sup>2+</sup>), pH 7.3 containing 50% glycerol, 0.5% BSA and 0.02% sodium azide

**Research Areas:** Cardiovascular

**Storage & Shipping:** Store at -20°C. Avoid repeated freezing and thawing



Immunocytochemistry analysis of ELOVL5 (green) in HeLa using ELOVL5 antibody, and DAPI (blue)



Western blot analysis of ELOVL5 in Jurkat, HeLa lysates using ELOVL5 antibody.