

ELP2 RABBIT PAB

Cat.#: S217146

Product Name: Anti-ELP2 Rabbit Polyclonal Antibody

Synonyms: StIP; StIP1; SHINC-2; STATIP1

UNIPROT ID: Q6IA86 (Gene Accession - BC032553)

Background: One member of the STAT family, Stat3, participates in a wide range of biological processes including nephrogenesis, gliogenesis, hepatogenesis, T cell proliferation, inflammation and oncogenesis. Many of these responses are triggered by the IL-6 family of cytokines, which transduce their vital signals through a common gp130 receptor chain . A novel Stat3-Interacting Protein, StIP1, contains 12 WD40 repeats, which mediate protein-protein interactions . StIP1 exhibits an affinity for members of the JNK family and may play a specific role in regulating Stat3 activation. Overexpression of StIP1 blocks Stat3 activation, nuclear translocation and Stat3-dependent induction of a reporter gene, suggesting that StIP1 regulates the ligand-dependent activation of Stat3, probably by serving as a scaffold protein that promotes the interaction between JNK and the Stat3 substrate.

Immunogen: Fusion protein of human ELP2

Applications: ELISA, IHC

Recommended Dilutions: IHC: 100-300; ELISA: 2000-10000

Host Species: Rabbit

Clonality: Rabbit Polyclonal

Isotype: Immunogen-specific rabbit IgG

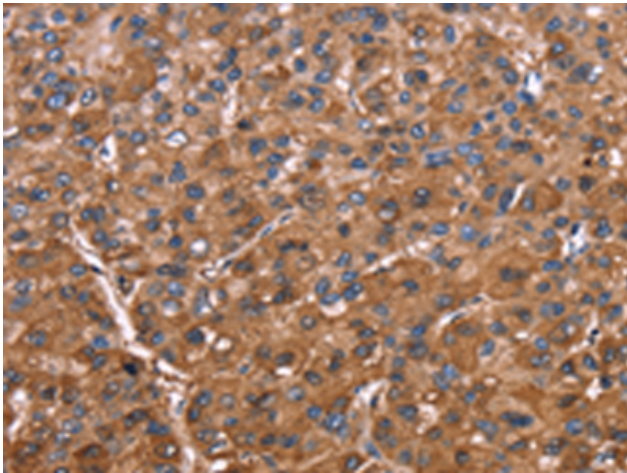
Purification: Antigen affinity purification

Species Reactivity: Human, Rat

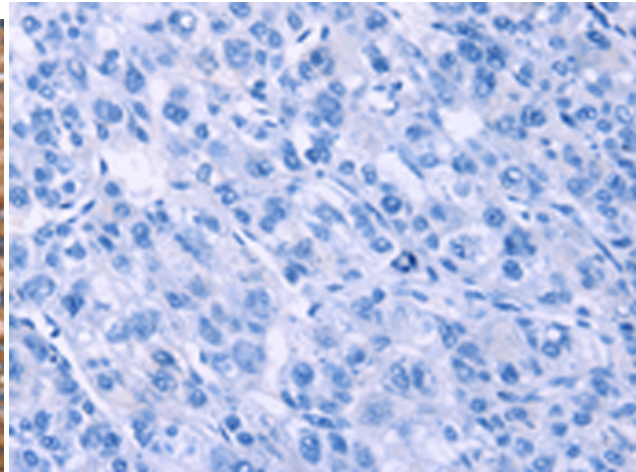
Constituents: PBS (without Mg²⁺ and Ca²⁺), pH 7.4, 150 mM NaCl, 0.05% Sodium Azide and 40% glycerol

Research Areas: Signal Transduction, Epigenetics and Nuclear Signaling

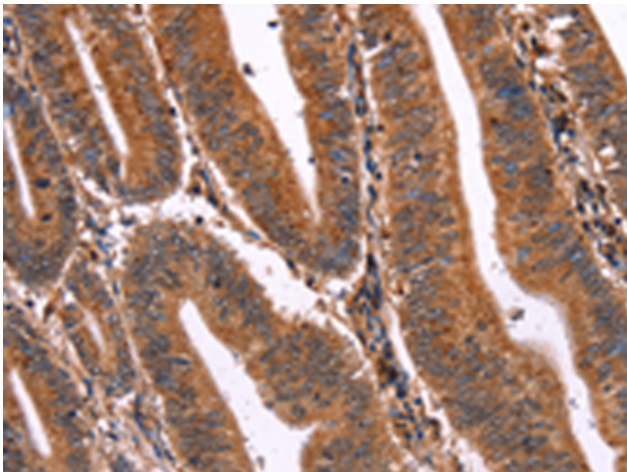
Storage & Shipping: Store at -20°C. Avoid repeated freezing and thawing



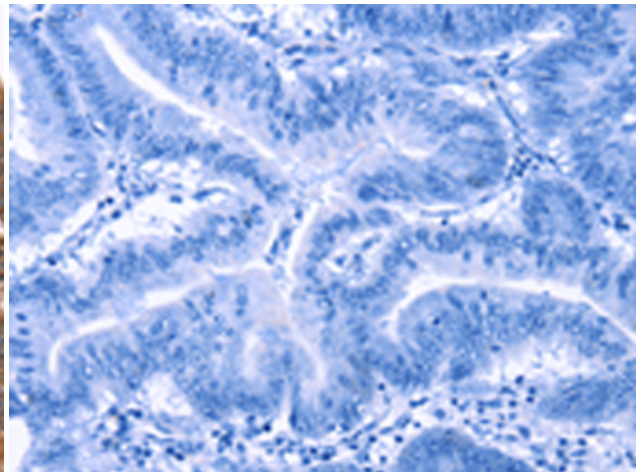
Immunohistochemistry analysis of paraffin embedded Human liver cancer tissue using 217146(ELP2 Antibody) at a dilution of 1/40(Cytoplasm).



In comparison with the IHC on the left, the same paraffin-embedded Human liver cancer tissue is first treated with the fusion protein and then with 217146(Anti-ELP2 Antibody) at dilution 1/40.



The image on the left is immunohistochemistry of paraffin-embedded Human colon cancer tissue using 217146(Anti-ELP2 Antibody) at a dilution of 1/40.



In comparison with the IHC on the left, the same paraffin-embedded Human colon cancer tissue is first treated with fusion protein and then with D221875(Anti-ELP2 Antibody) at dilution 1/40.