

EMC7 RABBIT PAB

Cat.#: S221641

Product Name: Anti-EMC7 Rabbit Polyclonal Antibody

Synonyms: HT022; C11orf3; C15orf24; ORF1-FL1

UNIPROT ID: Q9NPA0 (Gene Accession - NP_064539)

Background: Has been termed C11orf3, but is not the official C11orf3 as defined by HGNC and furthermore maps to chromosome 15.

Immunogen: Synthetic peptide of human EMC7

Applications: ELISA, WB, IHC

Recommended Dilutions: IHC: 50-200;WB: 500-2000;ELISA: 5000-10000

Host Species: Rabbit

Clonality: Rabbit Polyclonal

Isotype: Immunogen-specific rabbit IgG

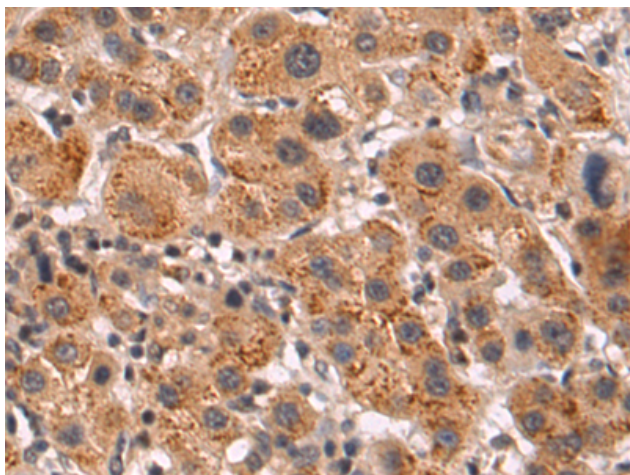
Purification: Antigen affinity purification

Species Reactivity: Human, Mouse

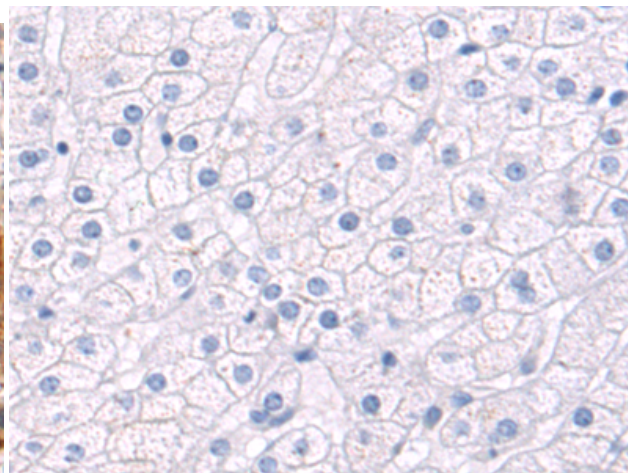
Constituents: PBS (without Mg²⁺ and Ca²⁺), pH 7.4, 150 mM NaCl, 0.05% Sodium Azide and 40% glycerol

Research Areas: Cell Biology

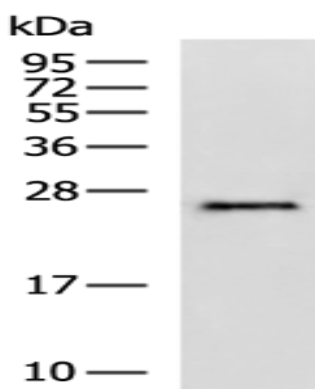
Storage & Shipping: Store at -20°C. Avoid repeated freezing and thawing



Immunohistochemistry analysis of paraffin embedded Human liver cancer tissue using 221641(EMC7 Antibody) at a dilution of 1/50(Cytoplasm).



In comparison with the IHC on the left, the same paraffin-embedded Human liver cancer tissue is first treated with the synthetic peptide and then with 221641(Anti-EMC7 Antibody) at dilution 1/50.



Gel: 12%SDS-PAGE, Lysate: 40 μ g;
Lane: Mouse skeletal muscle tissue lysate;
Primary antibody: 221641(EMC7 Antibody) at dilution 1/400;
Secondary antibody: HRP-conjugated Goat anti rabbit IgG at 1/5000 dilution;
Exposure time: 1 minute