

EMERIN RABBIT MAB

Cat.#: N262177

Product Name: Anti-Emerin Rabbit Monoclonal Antibody

Synonyms: STA; EDMD; LEMD5

UNIPROT ID: P50402

Background: Emerin may regulate gene expression through binding to other transcriptional regulators. Emerin binds to β -catenin and inhibits its nuclear accumulation. Recent studies demonstrate that Emerin is required for HIV-1 infectivity.

Immunogen: A synthetic peptide of human Emerin

Applications: WB,IHC-F,IHC-P,ICC/IF

Recommended Dilutions: WB: 1/500-1/1000 IHC: 1/50-1/100 IF: 1/50-1/200

Host Species: Rabbit

Clonality: Rabbit Monoclonal

Clone ID: R02-5J7

MW: Calculated MW: 29 kDa; Observed MW: 35 kDa

Isotype: IgG

Purification: Affinity Purified

Species Reactivity: Human,Mouse

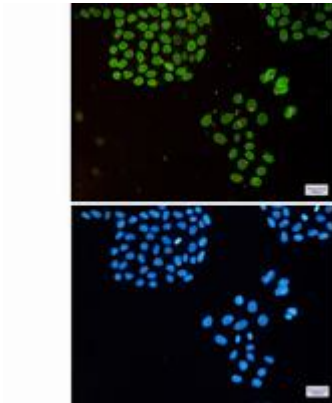
Conjugation: Unconjugated

Modification: Unmodified

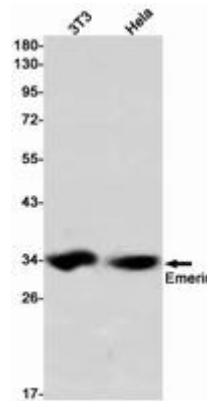
Constituents: PBS (without Mg^{2+} and Ca^{2+}), pH 7.3 containing 50% glycerol, 0.5% BSA and 0.02% sodium azide

Research Areas: Signal Transduction

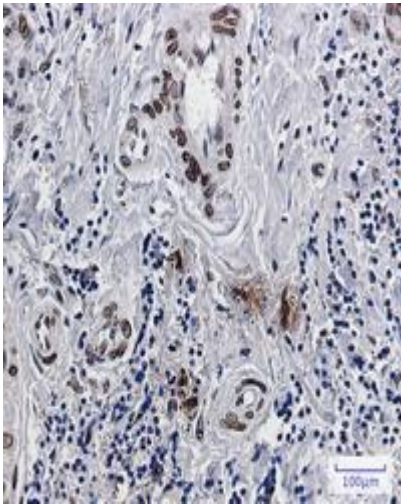
Storage & Shipping: Store at $-20^{\circ}C$. Avoid repeated freezing and thawing



Immunocytochemistry analysis of Emerin (green) in HeLa using Emerin antibody, and DAPI (blue)



Western blot analysis of Emerin in 3T3, HeLa lysates using Emerin antibody.



Immunohistochemistry analysis of paraffin-embedded Human breast cancer using Emerin antibody. High-pressure and temperature Sodium Citrate pH 6.0 was used for antigen retrieval.