

EMERIN RABBIT PAB

Cat.#: N225870

Product Name: Anti-Emerin Rabbit pAb

Synonyms: STA; EDMD; LEMD5

UNIPROT ID: P50402

Background: Emerin may regulate gene expression through binding to other transcriptional regulators. Emerin binds to β -catenin and inhibits its nuclear accumulation. Recent studies demonstrate that Emerin is required for HIV-1 infectivity.

Immunogen: A synthesized peptide derived from human Emerin

Applications: WB,IHC-P,ICC/IF

Recommended Dilutions: WB: 1/500-1/1000 IHC: 1/50-1/100 IF: 1/50-1/200

Host Species: Rabbit

Clonality: Rabbit Polyclonal

Clone ID: -

MW: Calculated MW: 29 kDa; Observed MW: 29 kDa

Isotype: IgG

Purification: Affinity Chromatography

Species Reactivity: Human,Mouse,Rat

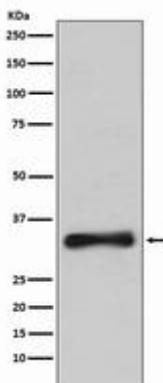
Conjugation: Unconjugated

Modification: Unmodified

Constituents: PBS (without Mg^{2+} and Ca^{2+}), pH 7.3 containing 50% glycerol, 0.5% BSA and 0.02% sodium azide

Research Areas: Signal Transduction

Storage & Shipping: Store at $-20^{\circ}C$. Avoid repeated freezing and thawing



Western blot analysis of Emerin in 293T lysates using Emerin antibody.



Product Description

Pioneering GTPase and Oncogene Product Development since 2010
