

## EMP1 RABBIT PAB

**Cat.#:** S215179

**Product Name:** Anti-EMP1 Rabbit Polyclonal Antibody

**Synonyms:** TMP; CL-20; EMP-1

**UNIPROT ID:** P54849 (Gene Accession - NP\_001414 )

**Background:** Involved in bleb assembly and cell death. Located in plasma membrane.

**Immunogen:** Synthetic peptide of human EMP1

**Applications:** ELISA, IHC

**Recommended Dilutions:** IHC: 50-200; ELISA: 5000-10000

**Host Species:** Rabbit

**Clonality:** Rabbit Polyclonal

**Isotype:** Immunogen-specific rabbit IgG

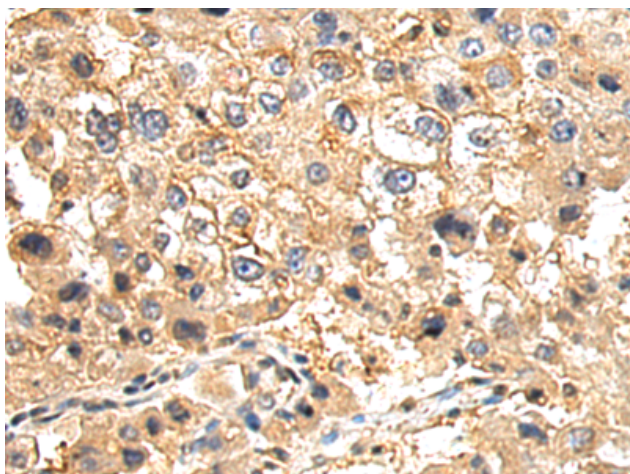
**Purification:** Antigen affinity purification

**Species Reactivity:** Human

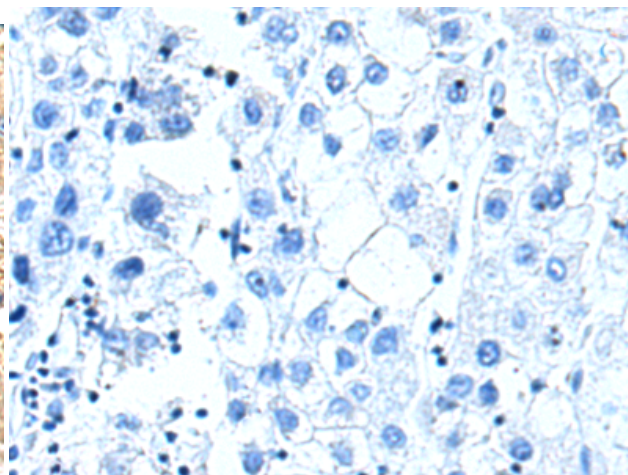
**Constituents:** PBS (without Mg<sup>2+</sup> and Ca<sup>2+</sup>), pH 7.4, 150 mM NaCl, 0.05% Sodium Azide and 40% glycerol

**Research Areas:** Cancer

**Storage & Shipping:** Store at -20°C. Avoid repeated freezing and thawing



Immunohistochemistry analysis of paraffin embedded Human liver cancer tissue using 215179(EMP1 Antibody) at a dilution of 1/50(Cytoplasm and Cell membrane).



In comparison with the IHC on the left, the same paraffin-embedded Human liver cancer tissue is first treated with the synthetic peptide and then with 215179(Anti-EMP1 Antibody) at dilution 1/50.