

EN1 RABBIT MAB

Cat.#: N262178

Product Name: Anti-EN1 Rabbit Monoclonal Antibody

Synonyms: EN1; Engrailed 1; Engrailed; Hu-En-1; Mo-en.1

UNIPROT ID: Q05925

Background: Belongs to the engrailed homeobox family.

Immunogen: A synthetic peptide of human EN1/Engrailed 1

Applications: WB,IP

Recommended Dilutions: WB: 1/500-1/1000 IP: 1/20

Host Species: Rabbit

Clonality: Rabbit Monoclonal

Clone ID: R02-8D2

MW: Calculated MW: 40 kDa; Observed MW: 50 kDa

Isotype: IgG

Purification: Affinity Purified

Species Reactivity: Rat

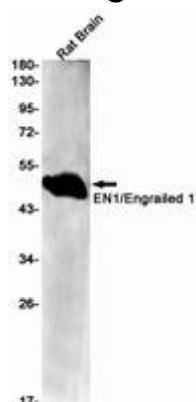
Conjugation: Unconjugated

Modification: Unmodified

Constituents: PBS (without Mg²⁺ and Ca²⁺), pH 7.3 containing 50% glycerol, 0.5% BSA and 0.02% sodium azide

Research Areas: Neuroscience

Storage & Shipping: Store at -20°C. Avoid repeated freezing and thawing



Western blot analysis of EN1/Engrailed 1 in rat Brain lysates using EN1 antibody.