

ENDOTHELIN 1 RABBIT PAB

Cat.#: N225172

Product Name: Anti-Endothelin 1 Rabbit pAb

Synonyms: EDN1; Endothelin-1; Preproendothelin-1; PPET1

UNIPROT ID: P05305

Background: The protein encoded by this gene is proteolytically processed to release a secreted peptide termed endothelin 1. This peptide is a potent vasoconstrictor and is produced by vascular endothelial cells. Endothelin 1 also can affect the central nervous system. Two transcript variants encoding different isoforms have been found for this gene.

Immunogen: The antiserum was produced against synthesized peptide derived from the Internal region of human EDN1. AA range:131-180

Applications: WB,IHC-P,ELISA

Recommended Dilutions: WB: 1/500-1/1000 IHC: 1/50-1/100 ELISA: 1/10000

Host Species: Rabbit

Clonality: Rabbit Polyclonal

Clone ID: -

MW: Calculated MW: 24 kDa; Observed MW: 24 kDa

Isotype: IgG

Purification: Affinity Purified

Species Reactivity: Human

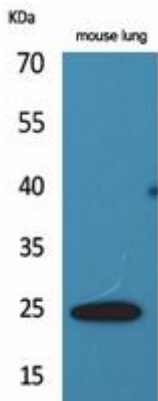
Conjugation: Unconjugated

Modification: Unmodified

Constituents: PBS (without Mg²⁺ and Ca²⁺), pH 7.3 containing 50% glycerol, 0.5% BSA and 0.02% sodium azide

Research Areas: Signal Transduction

Storage & Shipping: Store at -20°C. Avoid repeated freezing and thawing



Western blot analysis of Endothelin 1 in mouse lung lysates using Endothelin 1 antibody.