

ENO3 RABBIT MAB

Cat.#: N262179

Product Name: Anti-ENO3 Rabbit Monoclonal Antibody

Synonyms: enolase 3; MSE; GSD13

UNIPROT ID: P13929

Background: Appears to have a function in striated muscle development and regeneration.

Immunogen: A synthetic peptide of human ENO3

Applications: WB, ICC/IF

Recommended Dilutions: WB: 1/500-1/1000 IF: 1/50-1/200

Host Species: Rabbit

Clonality: Rabbit Monoclonal

Clone ID: R07-5B2

MW: Calculated MW: 47 kDa; Observed MW: 47 kDa

Isotype: IgG

Purification: Affinity Purified

Species Reactivity: Human, Mouse, Rat

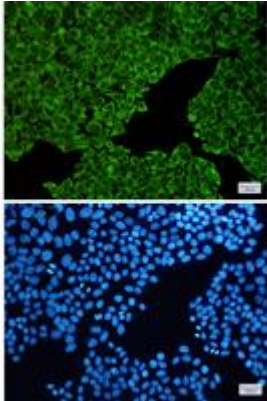
Conjugation: Unconjugated

Modification: Unmodified

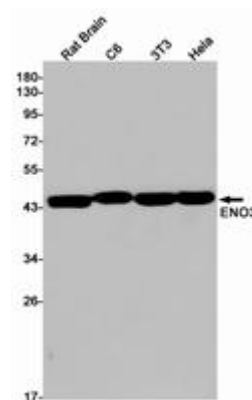
Constituents: PBS (without Mg²⁺ and Ca²⁺), pH 7.3 containing 50% glycerol, 0.5% BSA and 0.02% sodium azide

Research Areas: Signal Transduction

Storage & Shipping: Store at -20°C. Avoid repeated freezing and thawing



Immunocytochemistry analysis of ENO1/ENO2/ENO3 (green) in HeLa using ENO1/ENO2/ENO3 antibody, and DAPI (blue)



Western blot analysis of ENO3 in rat Brain, C6, 3T3, HeLa lysates using ENO3 antibody.